



Graduation 2025
SPCC April 2018

Graduation 2025: Cal State LA

Metric	2016 Rates	2017 Rates	2025 Goals
Freshman 6 yr	45.8%	46.8%	55%
Freshmen 4 yr	8.9%	8.2%	30%
Transfer 2 yr	33.8%	26.0%	36%
Transfer 4 yr	69.4%	74.3%	81%
Gap—URM	10% points	11% points	0
Gap—Pell	6% points	0% points	0

Key Early Initiatives

- ▶ Improve enrollment services infrastructure
- ▶ Increase access to classes
- ▶ Strengthen academic advising
- ▶ Implement new eAdvising tools
- ▶ Create Data-Driven Planning and Advising Interventions

2017–2018 Priorities

- Aligning University and College Planning
- Focus on Colleges
- Focus on Departments
 - Summer Chairs' Meetings

College Plans

- ▶ Obstacles to Graduation
- ▶ Current Initiatives and Improvements
- ▶ Challenges to Meeting Goals
- ▶ Assessment: How will you know if you are successful?

Aligning University and College Planning

- ▶ Advisement and Student Support
- ▶ Engaged Teaching and Learning
- ▶ Curriculum Coherence
- ▶ Enrollment Management and Data Capabilities
- ▶ Student Life and Sense of Belongingness

Advisement Improvement, CCOE

- Addition of a professional advisor to Increase access to advisement
- Increased use of e-Advising tools for proactive outreach to students
- Strategic advising interventions
 - Students with 120+ and 135+ units
 - Students with GPAs less than 2.5

Holistic Advising and Support, ECST

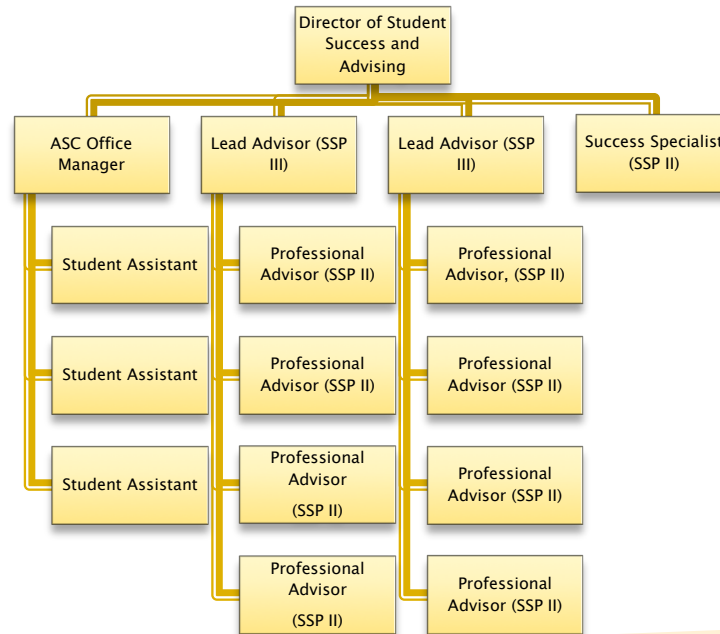
- ECST Advising Council
- Cultural Change
 - Closer collaboration between ESSC and major departments; broader collaboration with other campus divisions
 - Rethink advising as educational practice → *learning outcomes*
 - Proactive thinking → progress to degree (early alert, early intervention, timely identification of right major)
- Improved student support
 - Build support structure to enhance student success during FY
 - Golden Eagle Flight Plan – holistic advising model

HHS Advising Center Restructure I: Centralization

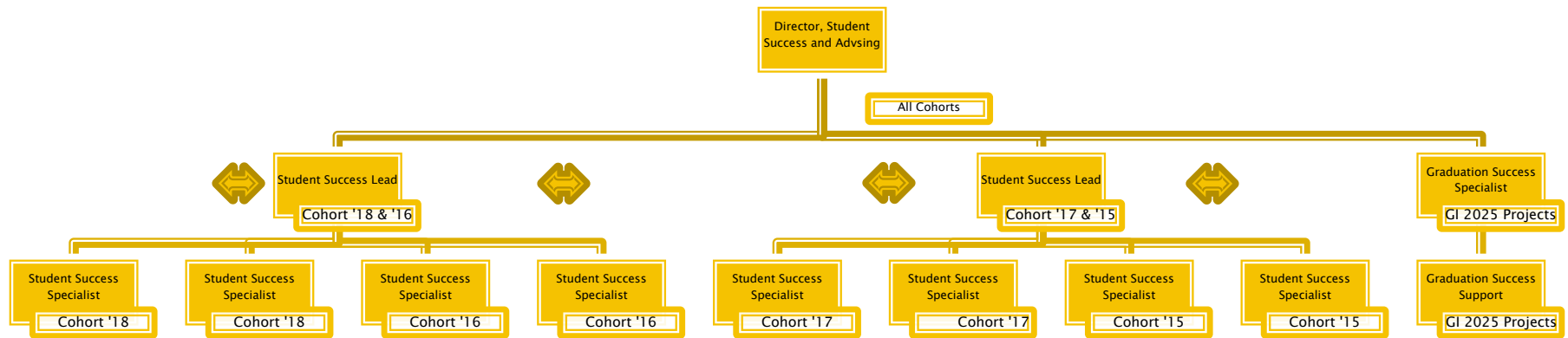
Pre-2016 Structure



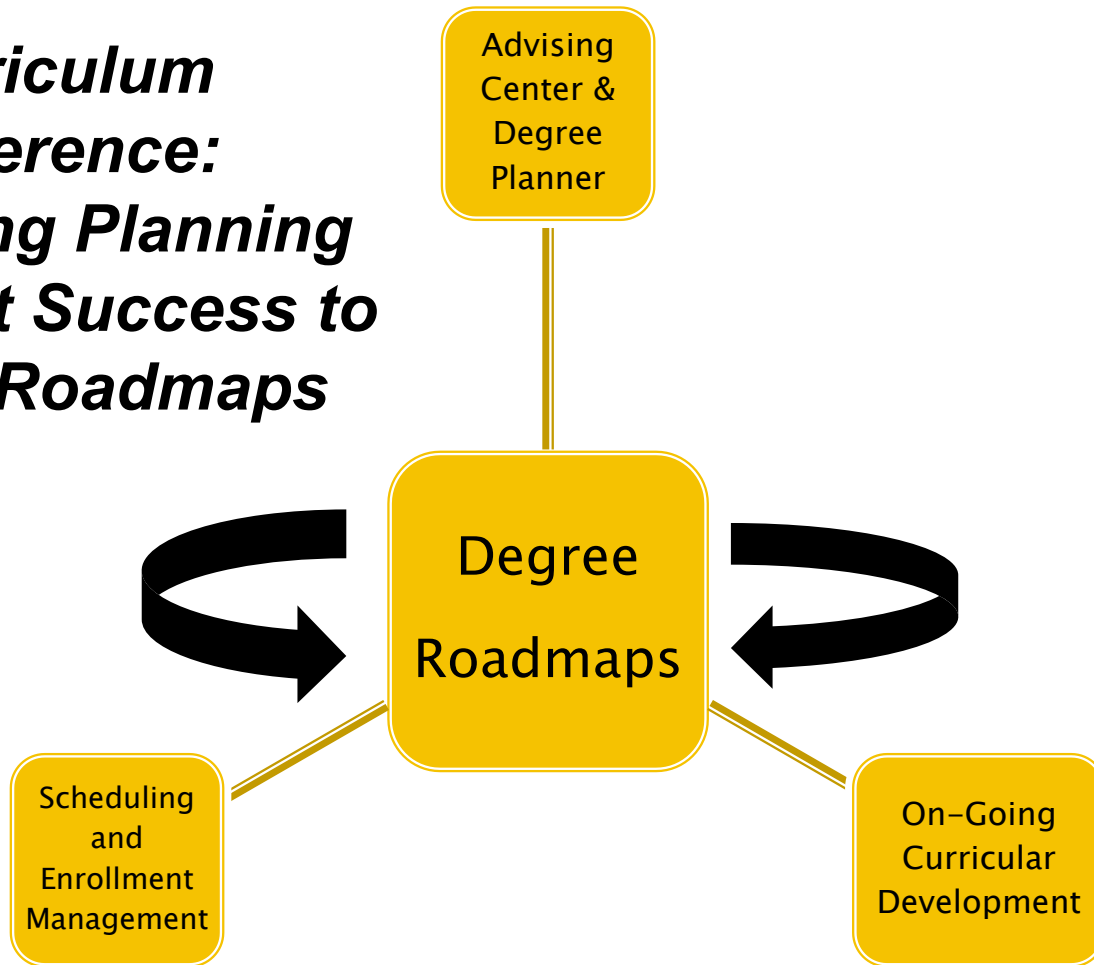
2016-2018 Structure



Advising Center Restructure II: Cohort Ownership



***Curriculum
Coherence:
Anchoring Planning
& Student Success to
Degree Roadmaps***



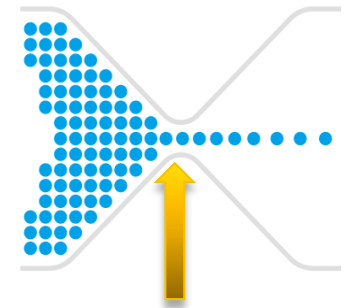
Curriculum, AL

Reduction in number of options that make scheduling and staffing difficult and complicate student choice

- Liberal Studies BA reduced by one option to three options
- Music BM reduced by six (!) to five options better targeted to current and emerging student demand and strengths in the program

Engaged Teaching and Learning, NSS

- Course Redesign in Multiple Departments (BIOL, SOC, PSY)
- Coordination of Courses with Multiple Sections (BIOL)
- Online Professional Development for Faculty



ACUE 

Quantitative Reasoning Redesign

- ▶ **Curriculum:** Eliminated remediation. Developed 3 pathways (STEM, GE, STATS) with co-requisite support courses.
- ▶ **Faculty Development:** 90 instructors to participate in semester-long program facilitated by math education specialists, 6 modules from ACUE's *Course in Effective Teaching Practices*.
- ▶ **Student Support:** EAB's early warning system will be used to identify, advise, and provide academic coaching for students who struggle in class.

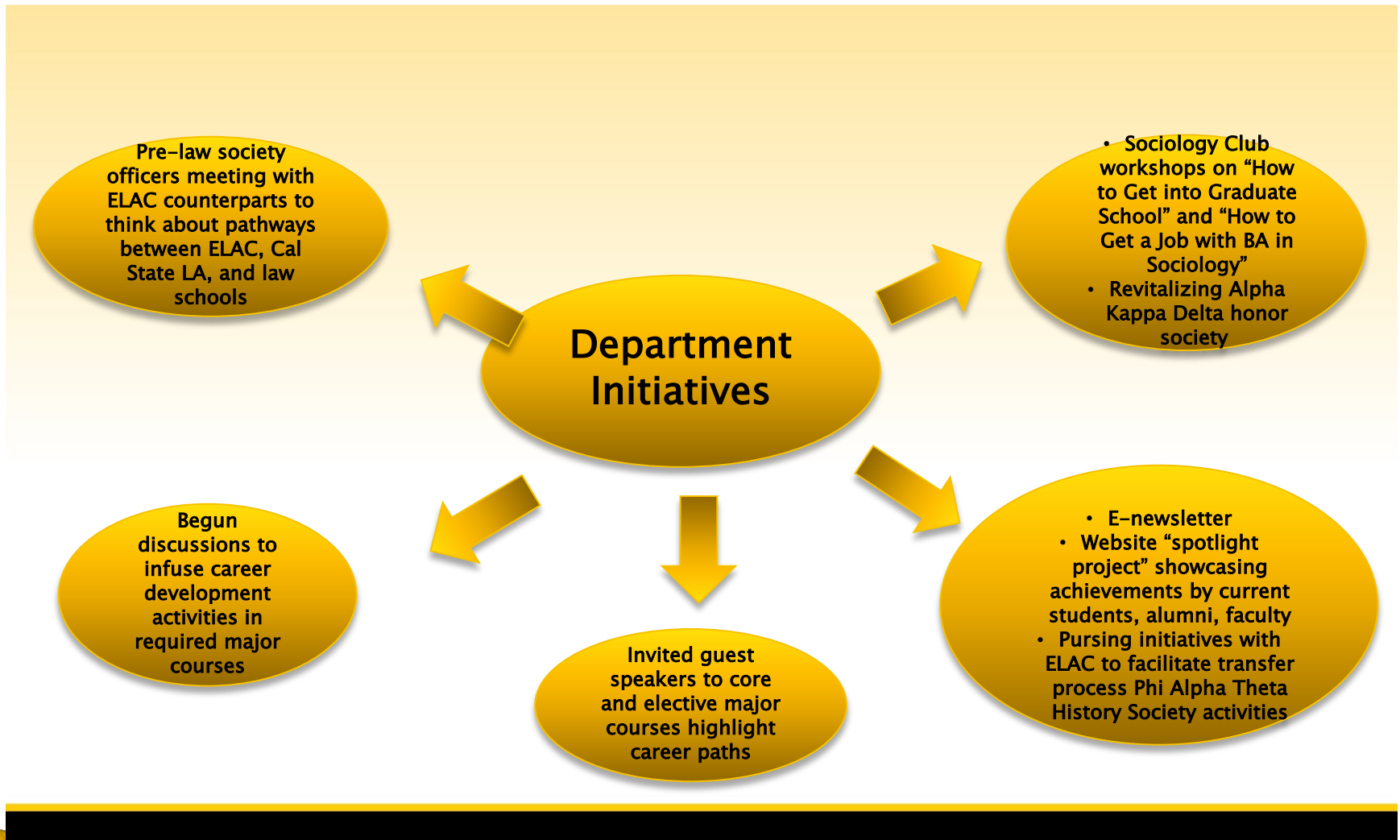
Engaged Faculty and Active Learning

- ECST Teaching & Learning Academy
 - Bring faculty across disciplines together to share ideas and best practices
 - Build a supportive and inclusive community for all ECST faculty (including adjunct professors)
- Provide more support for faculty development
- Strengthen faculty review process
 - Encourage reflective teaching with continuous assessment and improvement
 - Self-organized FLC or workgroups to ensure consistency, share teaching strategies and ideas to enhance student learning

Enrollment Management, CBE

- ▶ Chair awareness of dashboard analytics for classroom availability, planning based on DFW rates, accumulated demand, previous waitlists
- ▶ Online/hybrid course development for core CBE courses
- ▶ Additional 133 sections from Spring 2017 to Spring 2018
- ▶ Strategic Focus on Largest “Bottlenecks”
 - BUS 4150: Change in teaching format allowed for 13 sections in Spring 2018 (as opposed to 4 in 2016)

Student Life and Sense of Belonging



***Student Life and
Belonging:
Redesigning the
Introduction to Higher
Education (IHE)
Course***

**The 3 Pillars
of IHE**

WISE
Intervention

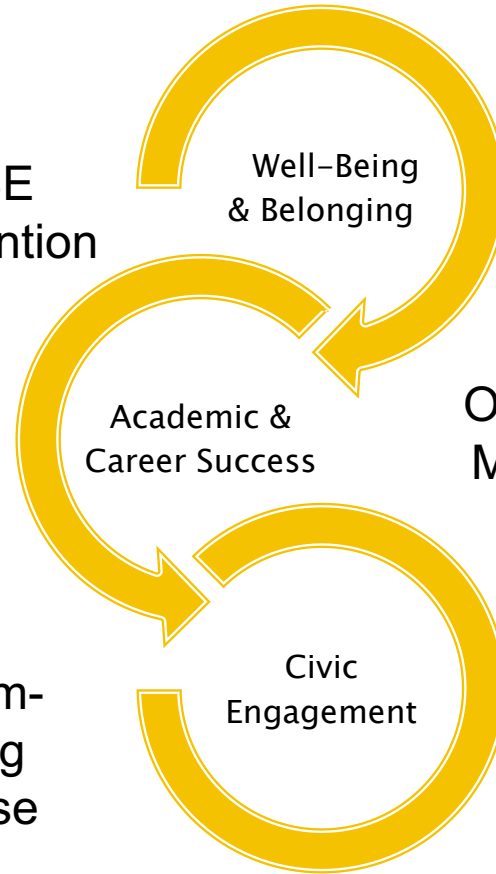
Well-Being
& Belonging

Academic &
Career Success

Overview of
Majors and
Degree
Planner

Problem-
Solving
Exercise

Civic
Engagement



Metrics for College Performance Over Time

Within 1 Year...

- *Build schedules that meet student demand*
- *Number of Hybrid/On-Line Courses Offered*
- *Number of Faculty Completing CETL trainings Reduction in Bottleneck Courses*
- *Reduction in DFW Rates*

Over 2-3 Years...

- **Efficacy in Meeting Student Demand*
- **Continue building schedules that meet student demand*
- **Number of Hybrid/On-Line Courses Offered*
- **Number of Faculty Completing CETL trainings Reduction in Bottleneck Courses*
- **Reduction in DFW*

In 4-5 Years...

Timely Graduation

- ***Improvement in 4- Year Graduation Rates for Freshman*
- ***Improvement in 2- Year Graduation Rates for Transfer Students*

Metrics for Student Success Over Time

Within 1 Year...

**Increase in Average Student Load*

**Improvement in Grade Point Average*

Over 2-3 Years...

***Continued Increase in Average Student Load*

***Sustained Improvement in Grade Point Average*

***Retention*

In 4-5 Years...

Timely Graduation

****Improvement in 4- Year Graduation Rates for Freshman*

****Improvement in 2- Year Graduation Rates for Transfer Students*