



CAL STATE LA

CALIFORNIA STATE UNIVERSITY, LOS ANGELES

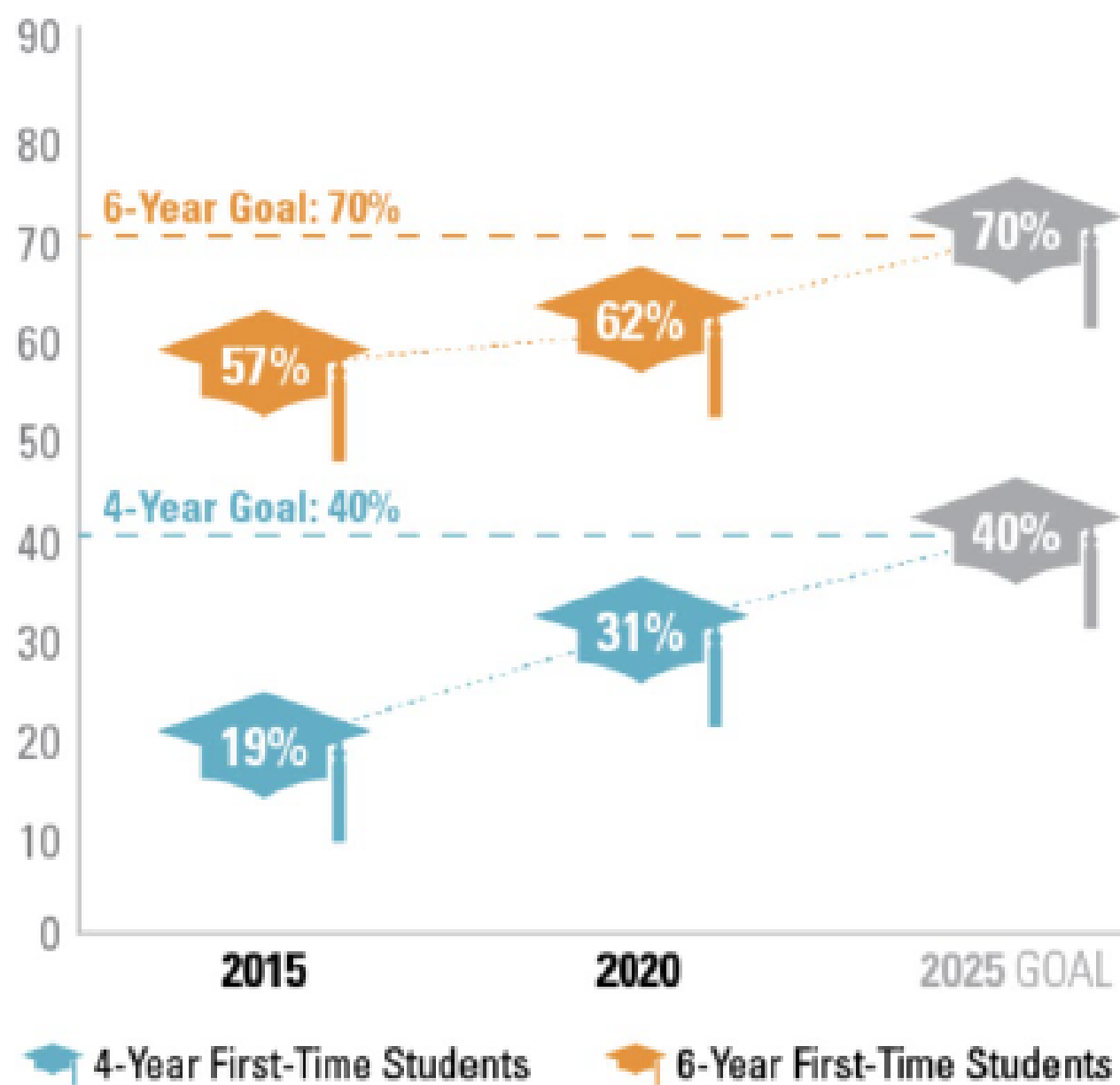
Why GI 2025?



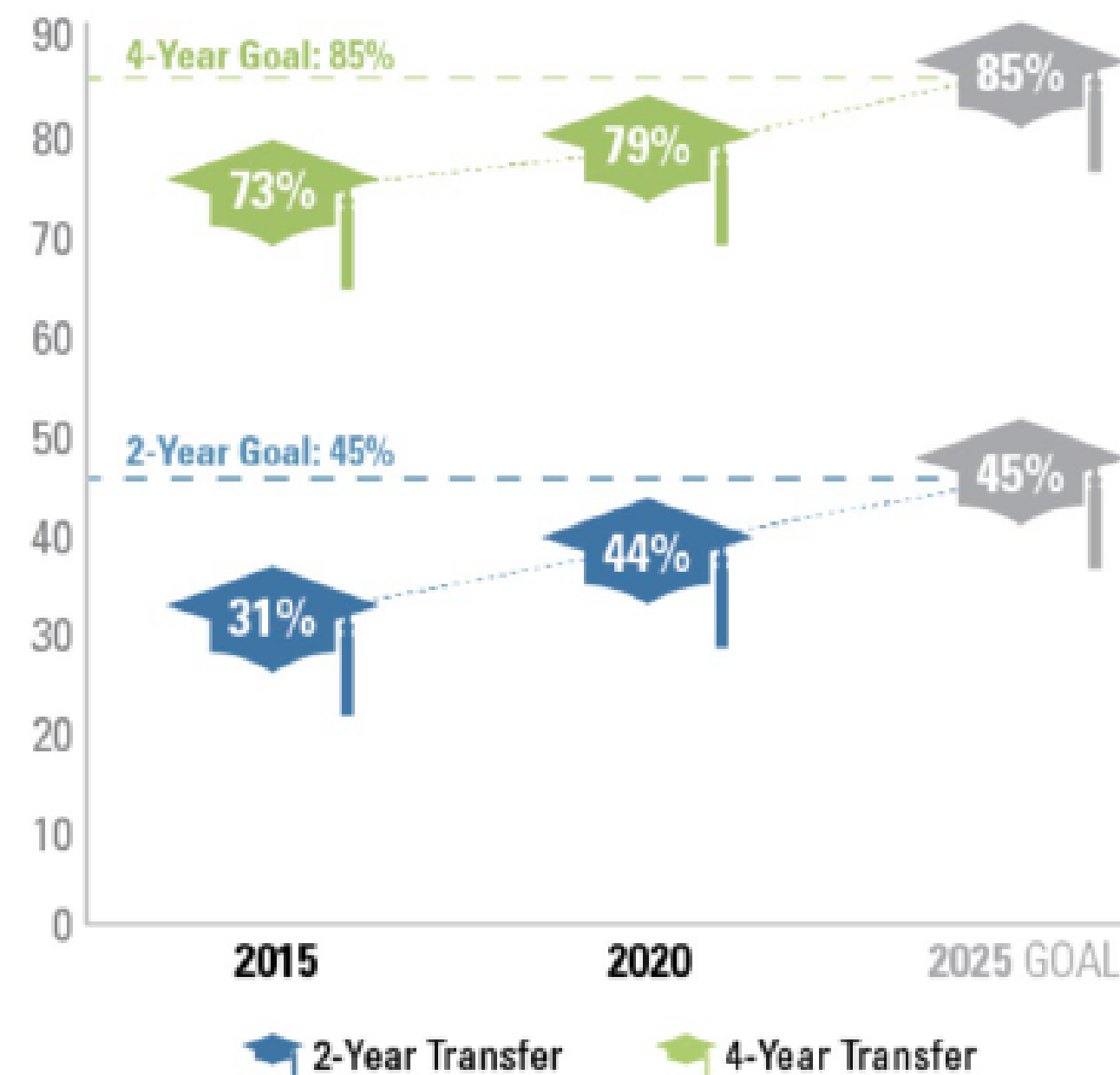
WHAT IS GRADUATION INITIATIVE 2025?

California State University's ambitious initiative to increase graduation rates for all CSU students while eliminating opportunity and achievement gaps.

FIRST-TIME STUDENTS

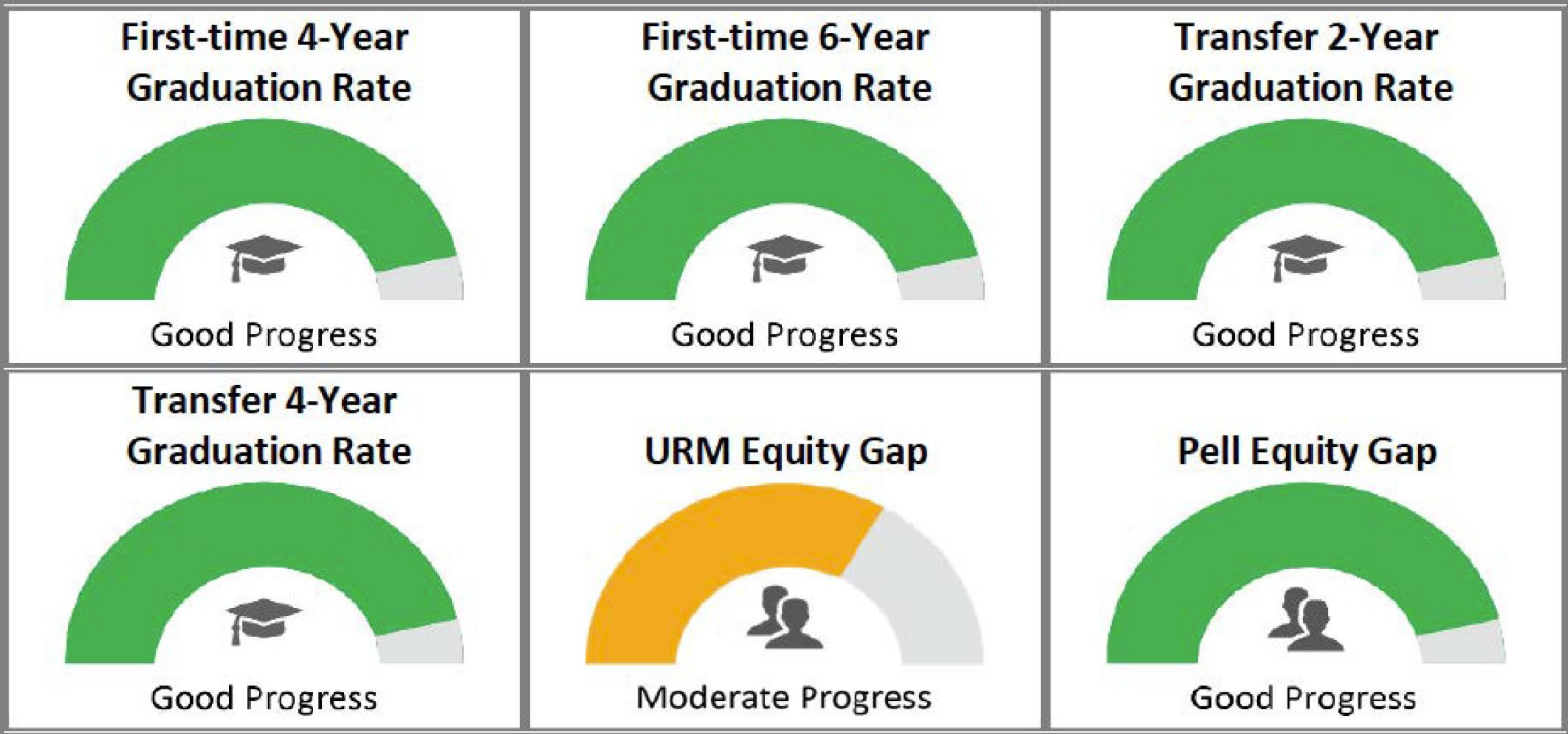


TRANSFER STUDENTS



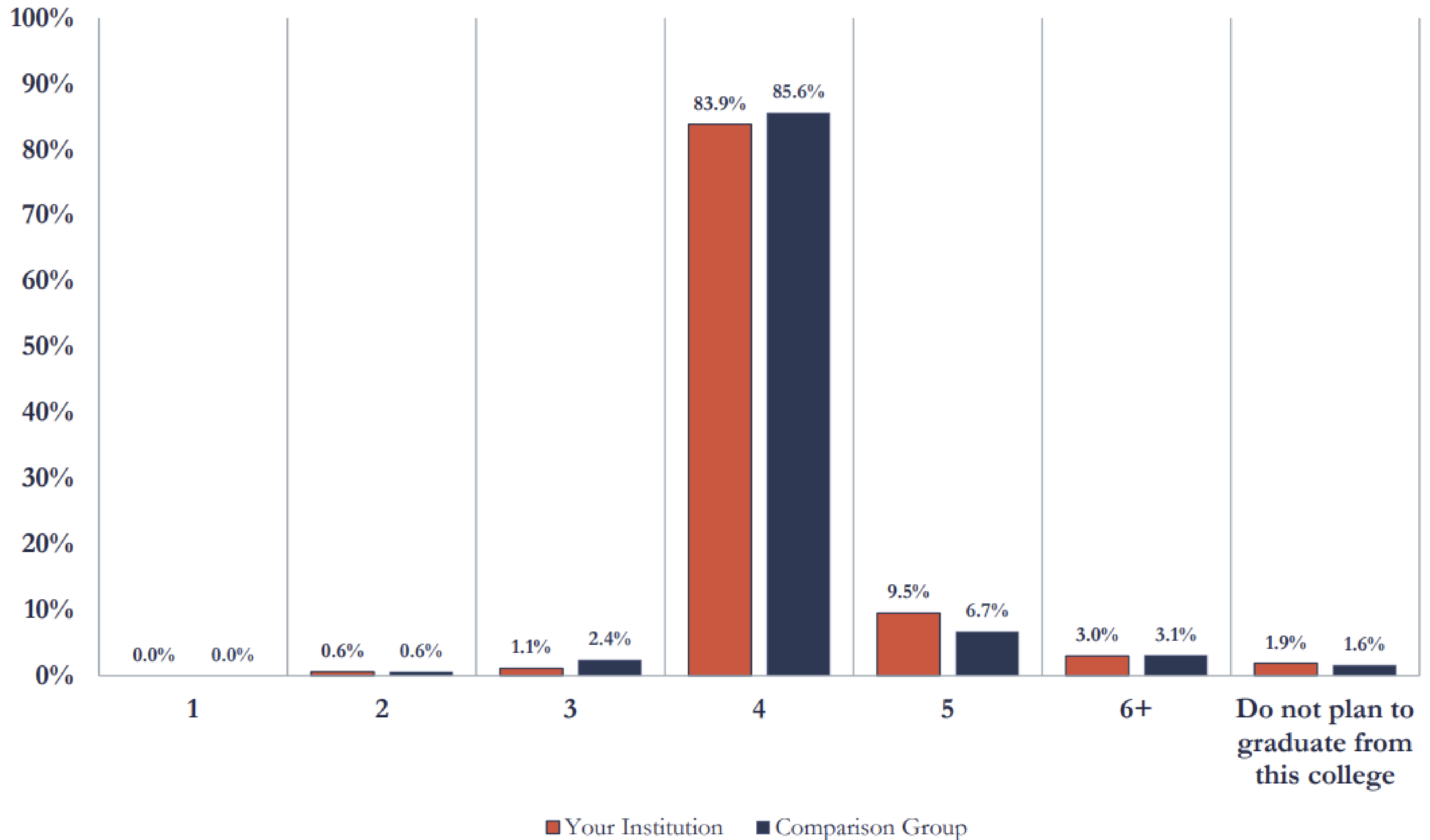
Cal State LA Progress Summary

Six years into this initiative, Cal State LA is making good progress toward 5 of its goals and moderate progress toward one other.



Expectations: Time-to-Degree

How many years do you expect it will take you to graduate from this college?



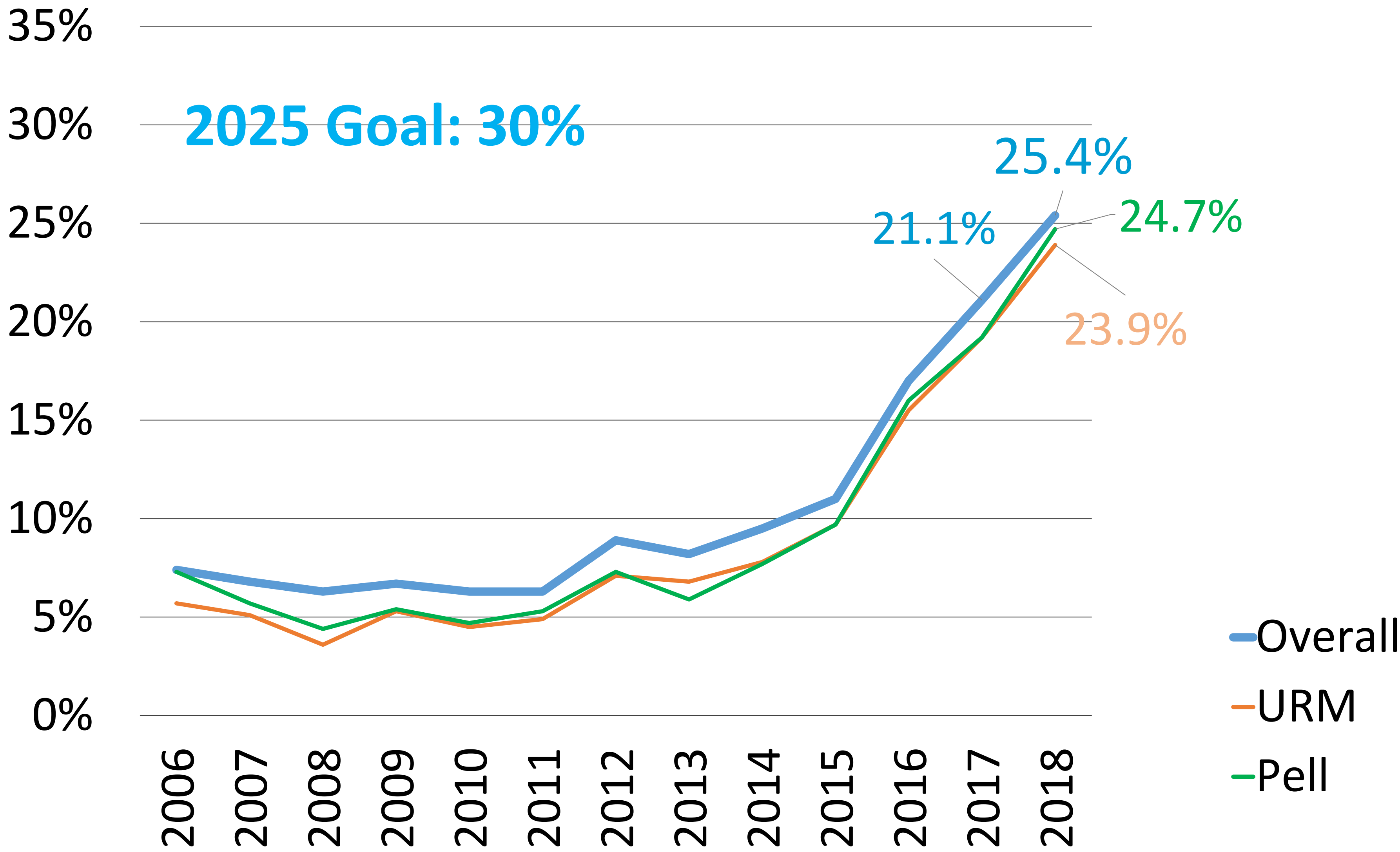
Cal State LA's Graduation Initiative 2025 Rates

| | 2025 Goal | 2022 |
|---------------------------------------|-----------|--------------|
| Freshmen (FTF) 4 year graduation rate | 30% | 25.4% |
| Freshmen (FTF) 6 year graduation rate | 55% | 51.4% |
| Transfer 2 year graduation rate | 36% | 41.7% |
| Transfer 4 year graduation rate | 81% | 83.6% |

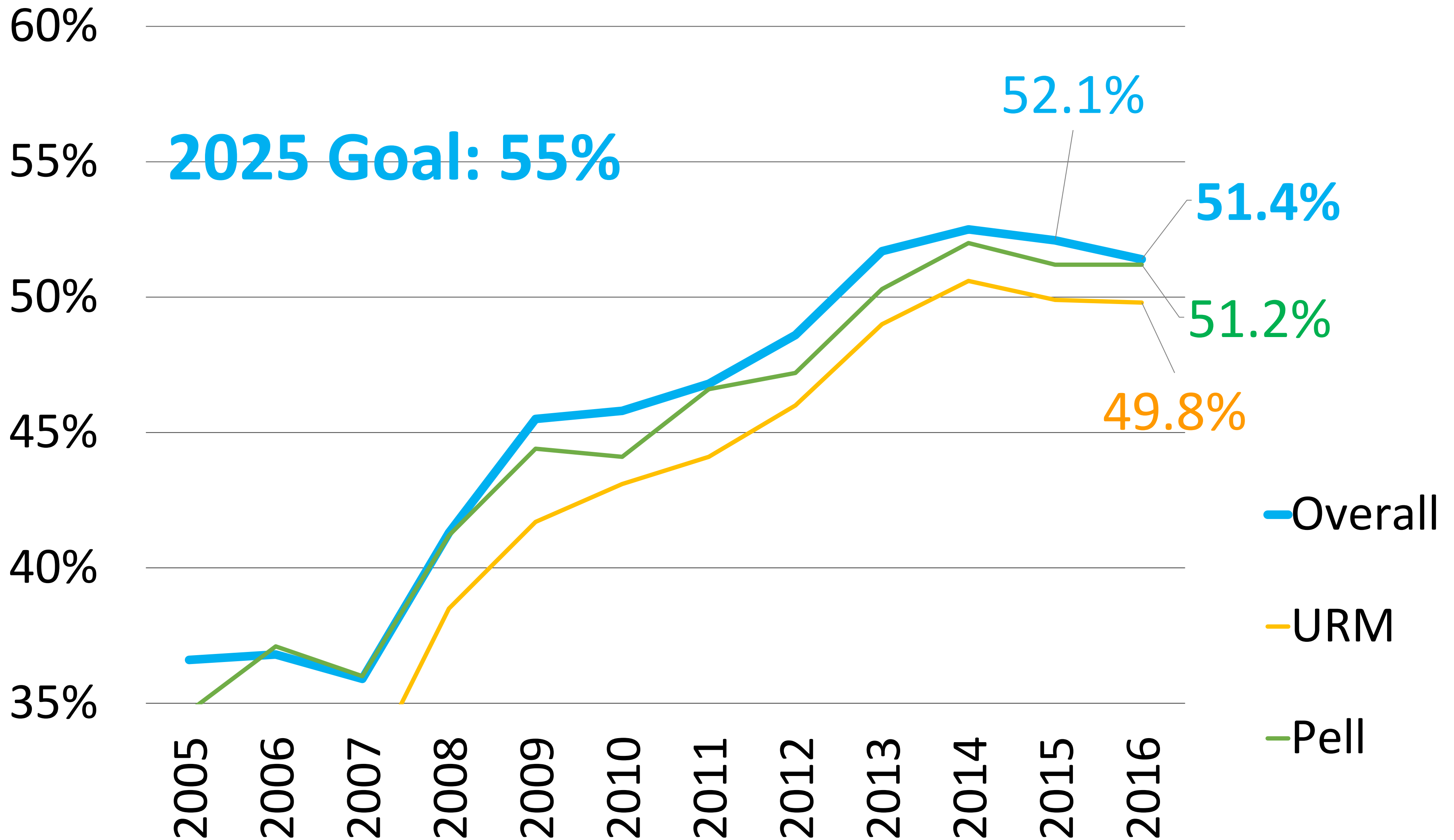
Cal State LA's Graduation Initiative 2025 Rates

| | 2025 Goal | Current |
|---|-----------|----------------|
| Gap – Historically Underrepresented students and non-underrepresented students in 6 year grad rates | 0% | 6.6% |
| Gap – Pell recipients and non-recipients in 6 year grad rates | 0% | 0.9% |

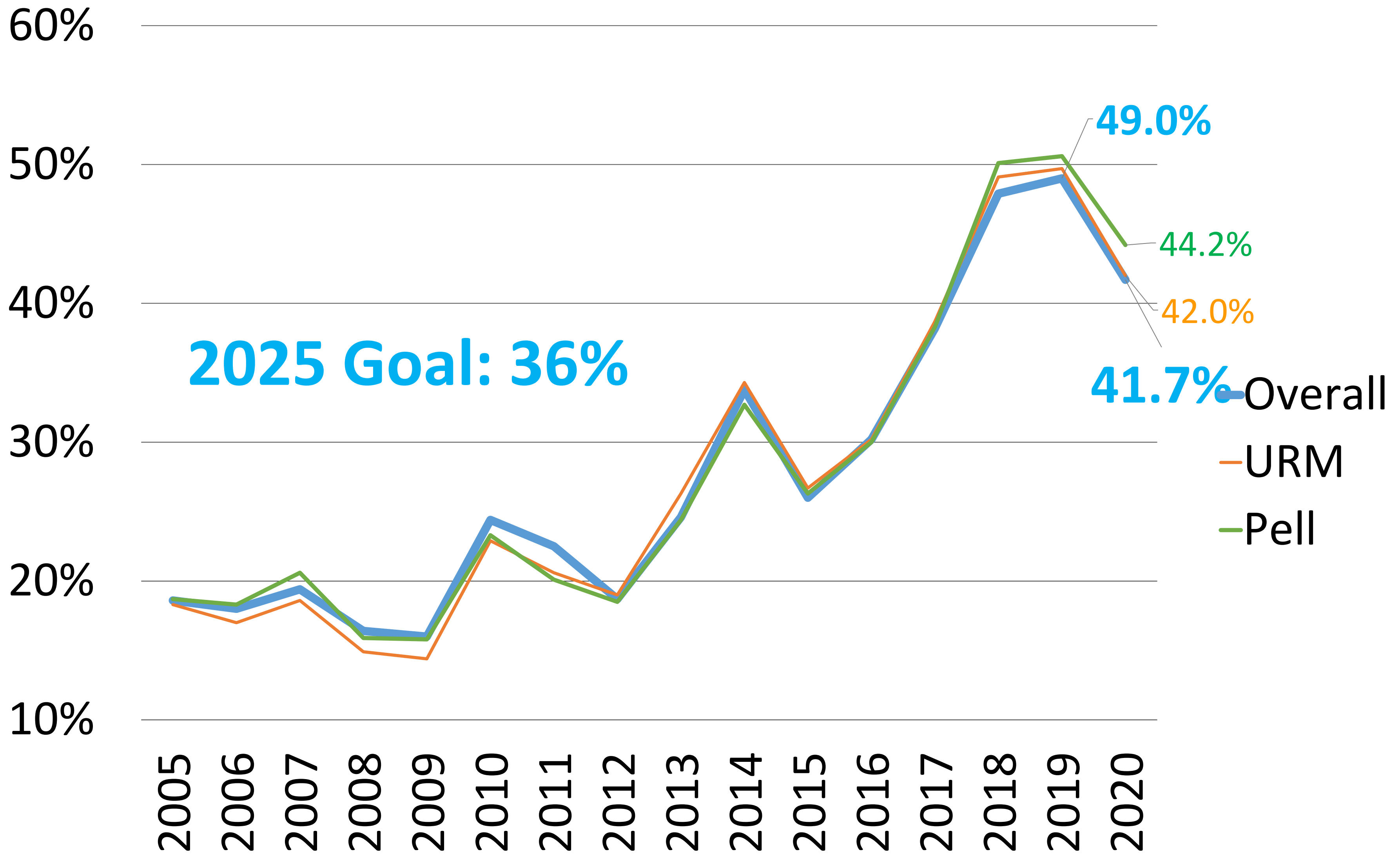
Freshmen **4 Year** Graduation Rate by Incoming Cohort Year



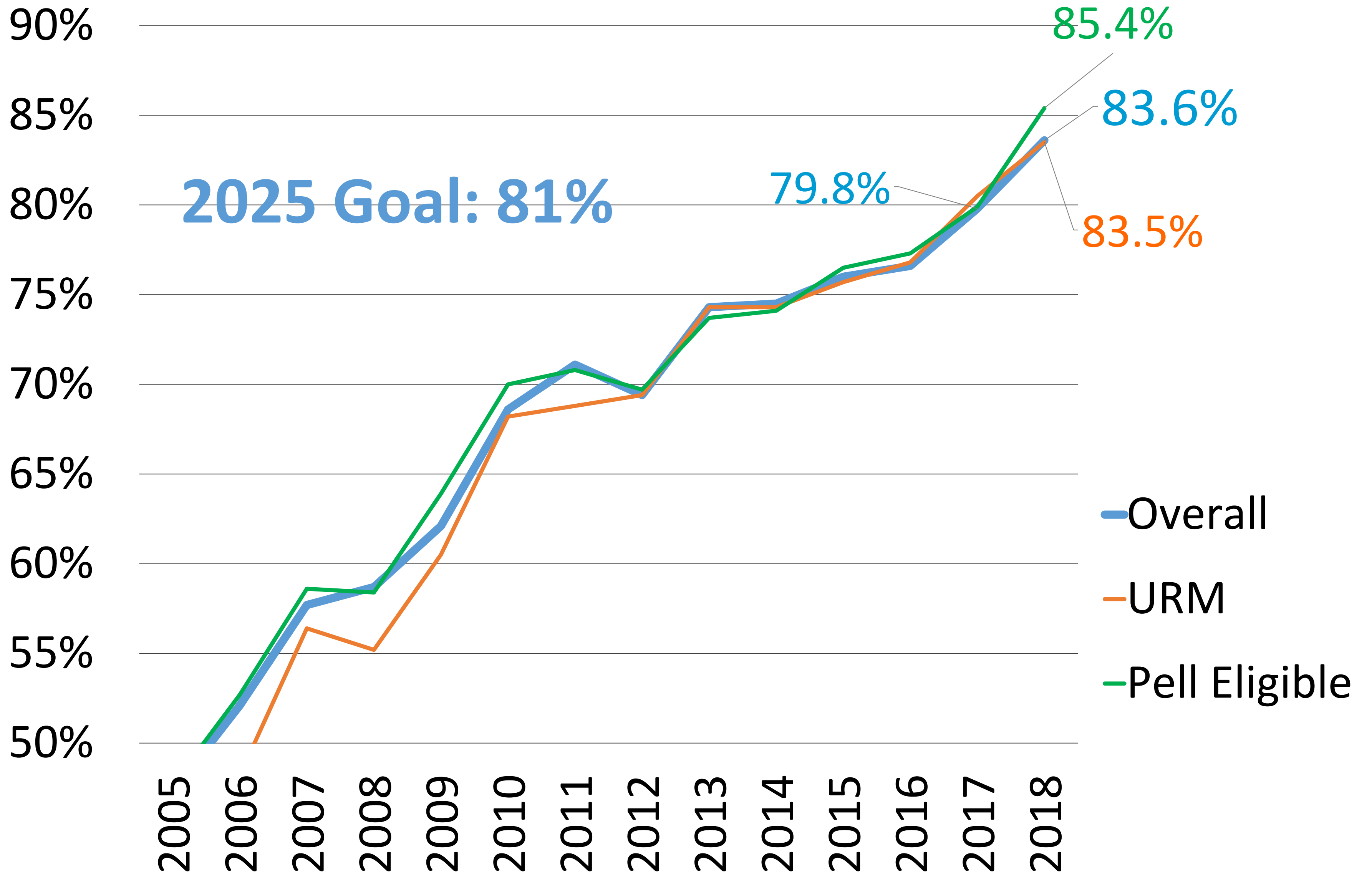
Freshman **6 year** Graduation Rate by Incoming Cohort



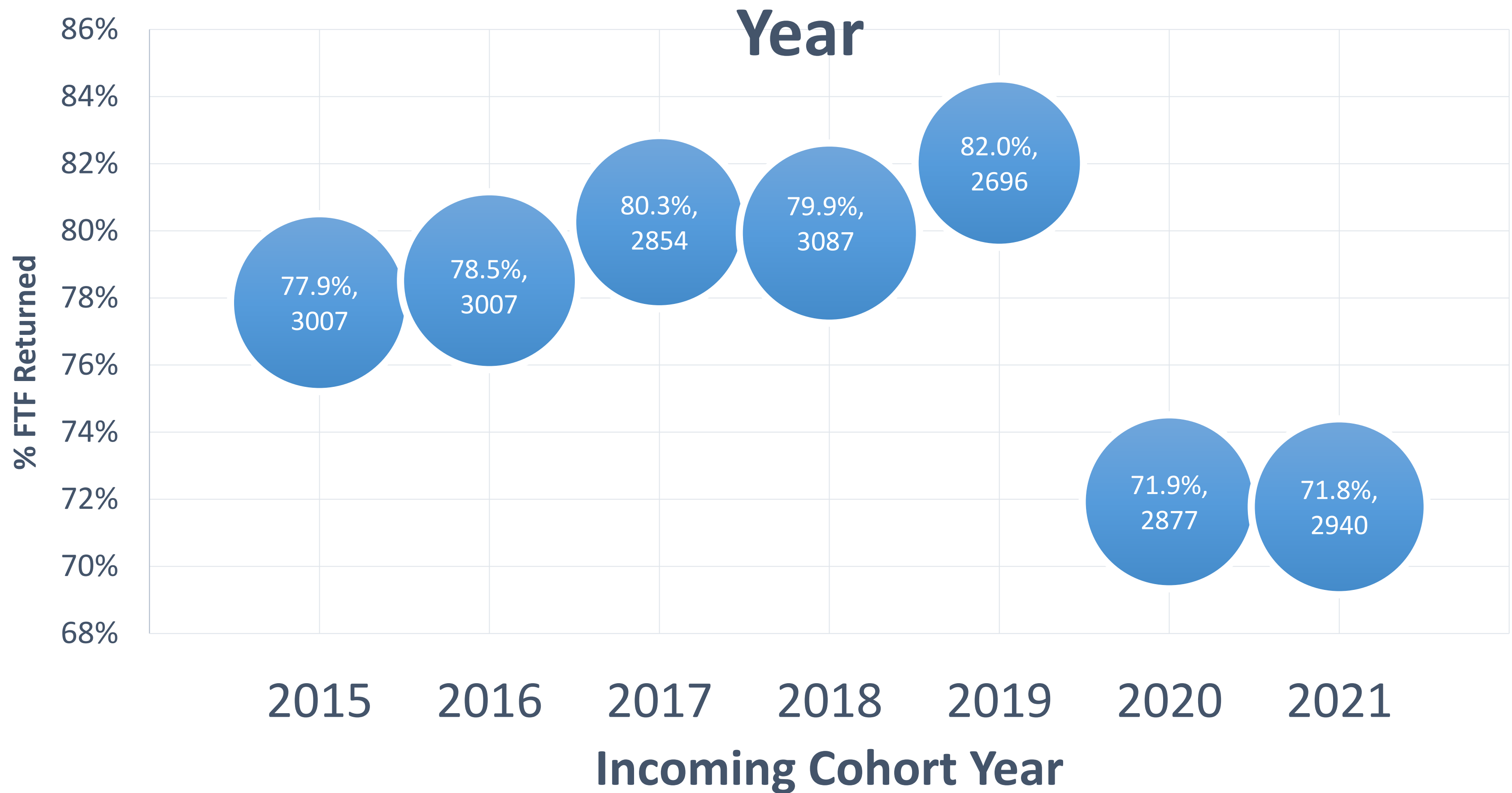
Transfer **2 Year** Graduation Rate by Incoming Cohort Year



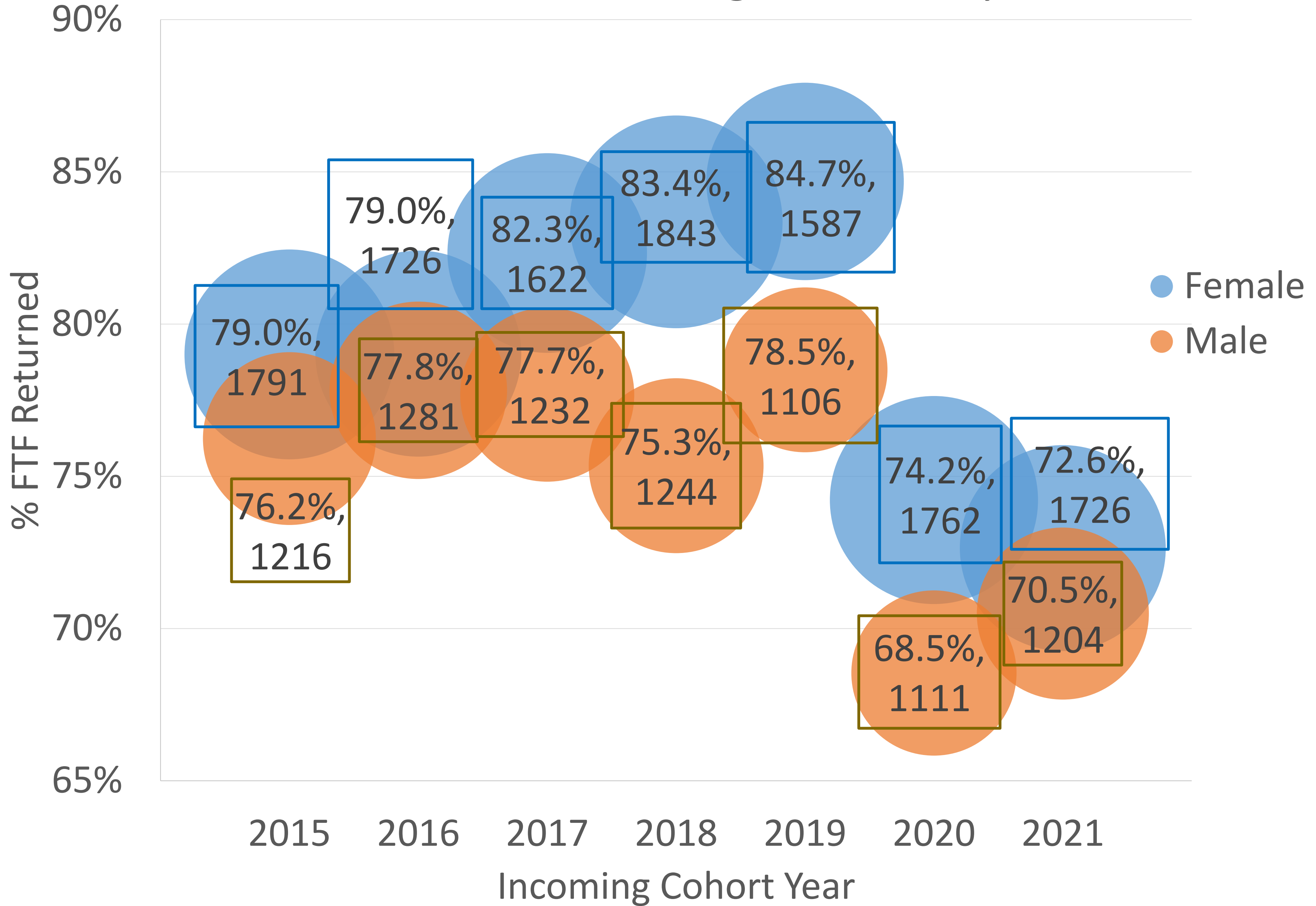
Transfer 4 Year Graduation Rate by Incoming Cohort Year



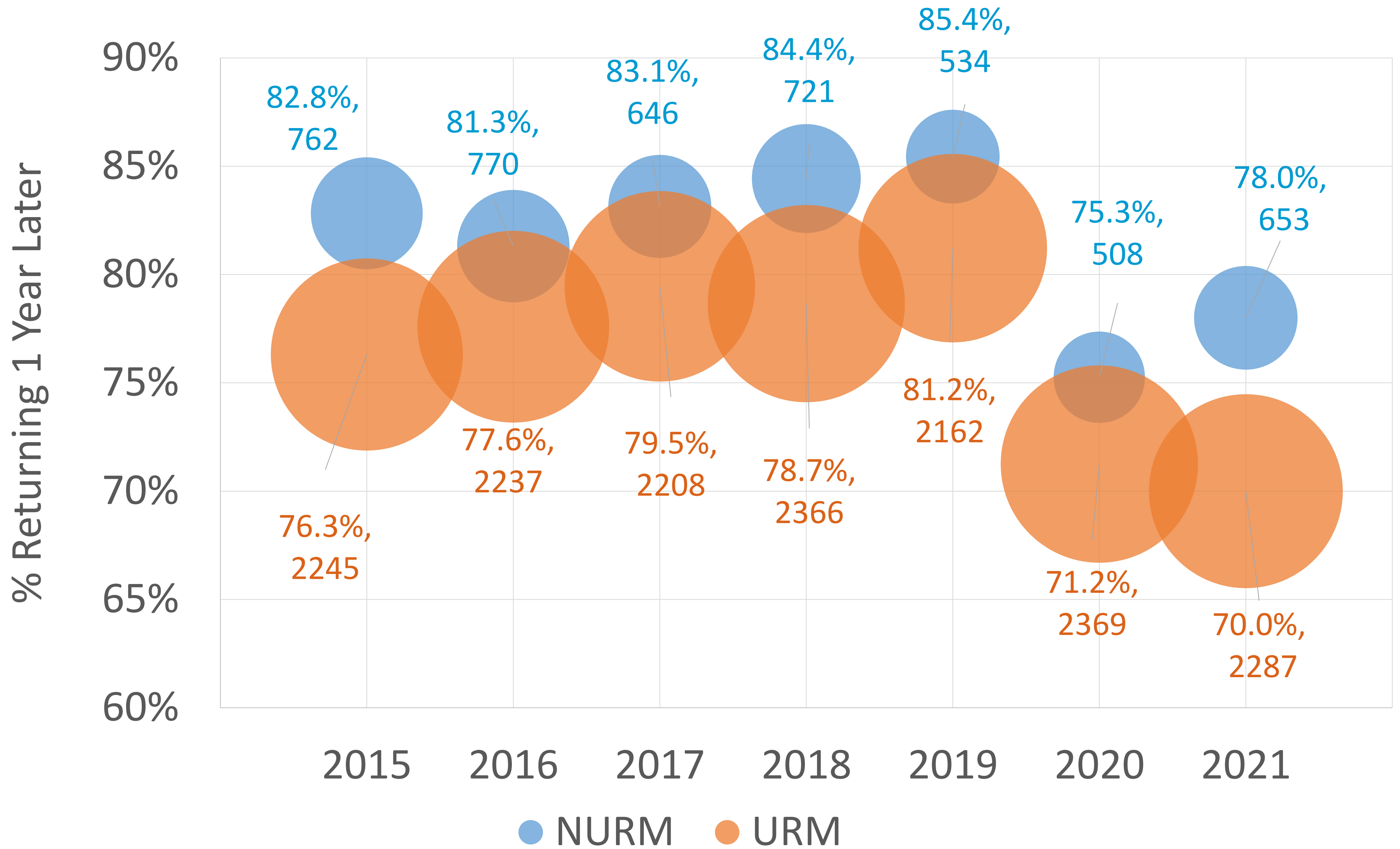
Percent of FTF Cohort Returning after 1



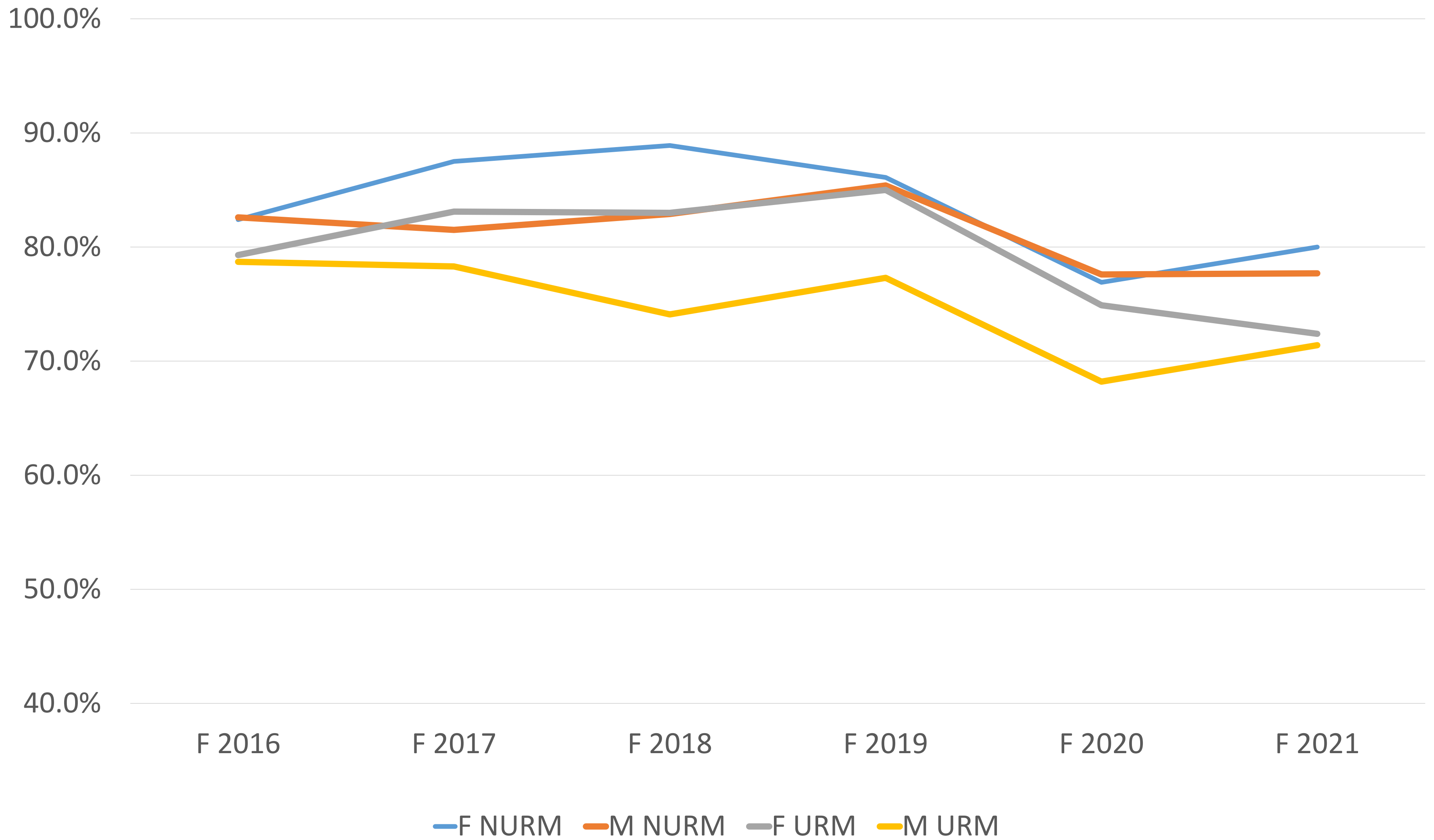
% and # of FTF Cohort Returning after 1 Yr by Gender



1 Year FTF Retention % and # by Cohort Year and URM/NURM



% of FTF Returning after 1 year by Sex and URM



Retention Rates by Cohort



■ FTF Cohort Size — 1 Yr Retention — 2 Yr Retention — 3 Yr Retention

CSU GI 2025 Equity priority initiatives

1. Re-Engage and Re-Enroll Underserved Students
2. Expand Credit Opportunities with Summer/Intersession/
help students complete 60 units by the end of the 2nd year
3. Ensure Equitable Access to Digital Degree Roadmaps
4. Eliminate Administrative Barriers to Graduation
5. Promote Equitable Learning Practices and Reduce DFW Rates
6. Increase completion of written communication and
quantitative reasoning in the first year

<https://www.calstatela.edu/provost/graduation-2025>

GRADUATION 2025

The Graduation 2025 Consultative Group focuses on the Student Success strategic priority area.

Student Success Plans



Graduation 2025 Consultative Group Members



Meeting Updates



Progress Reports

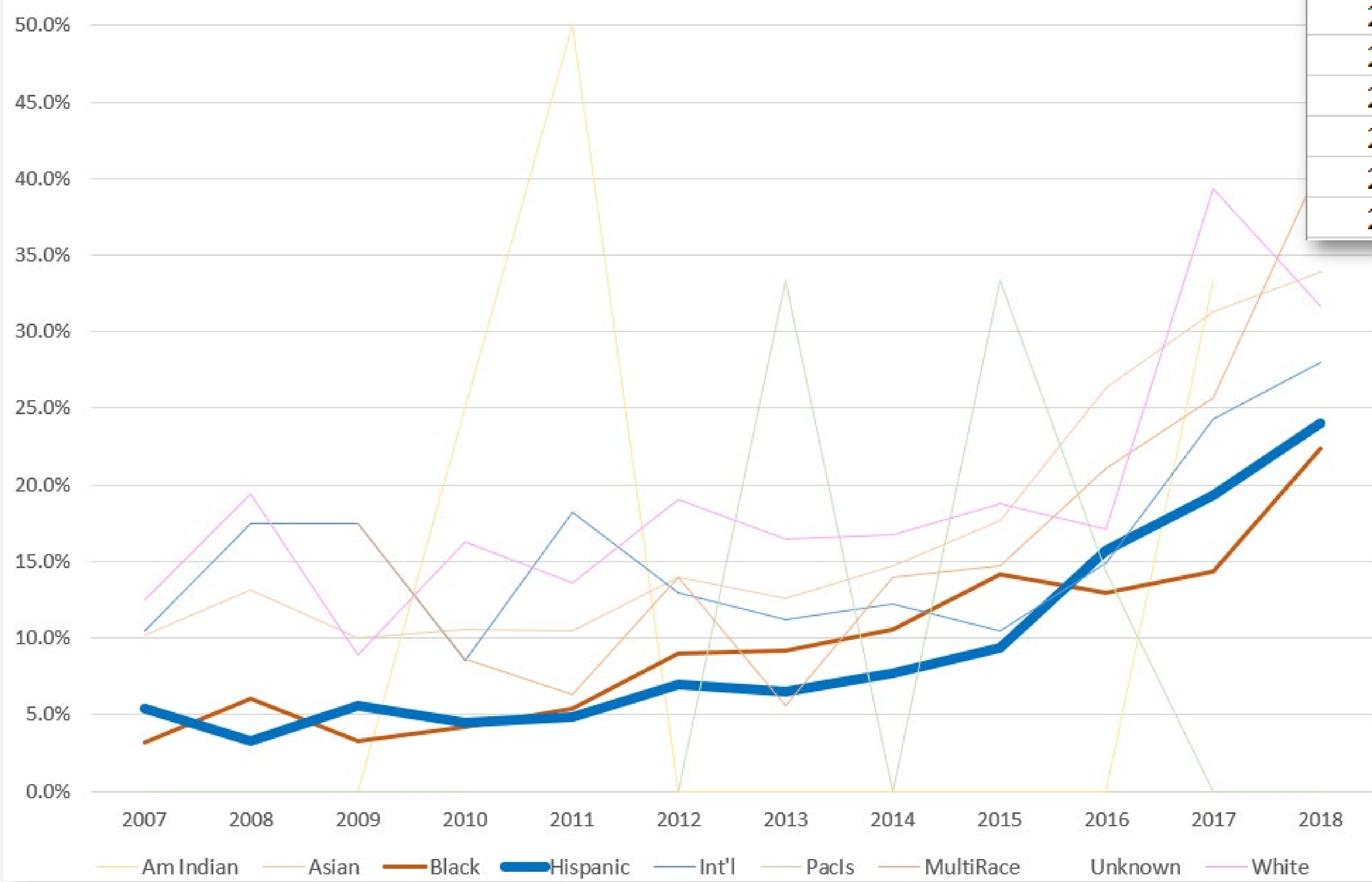


Graduation 2025 Data



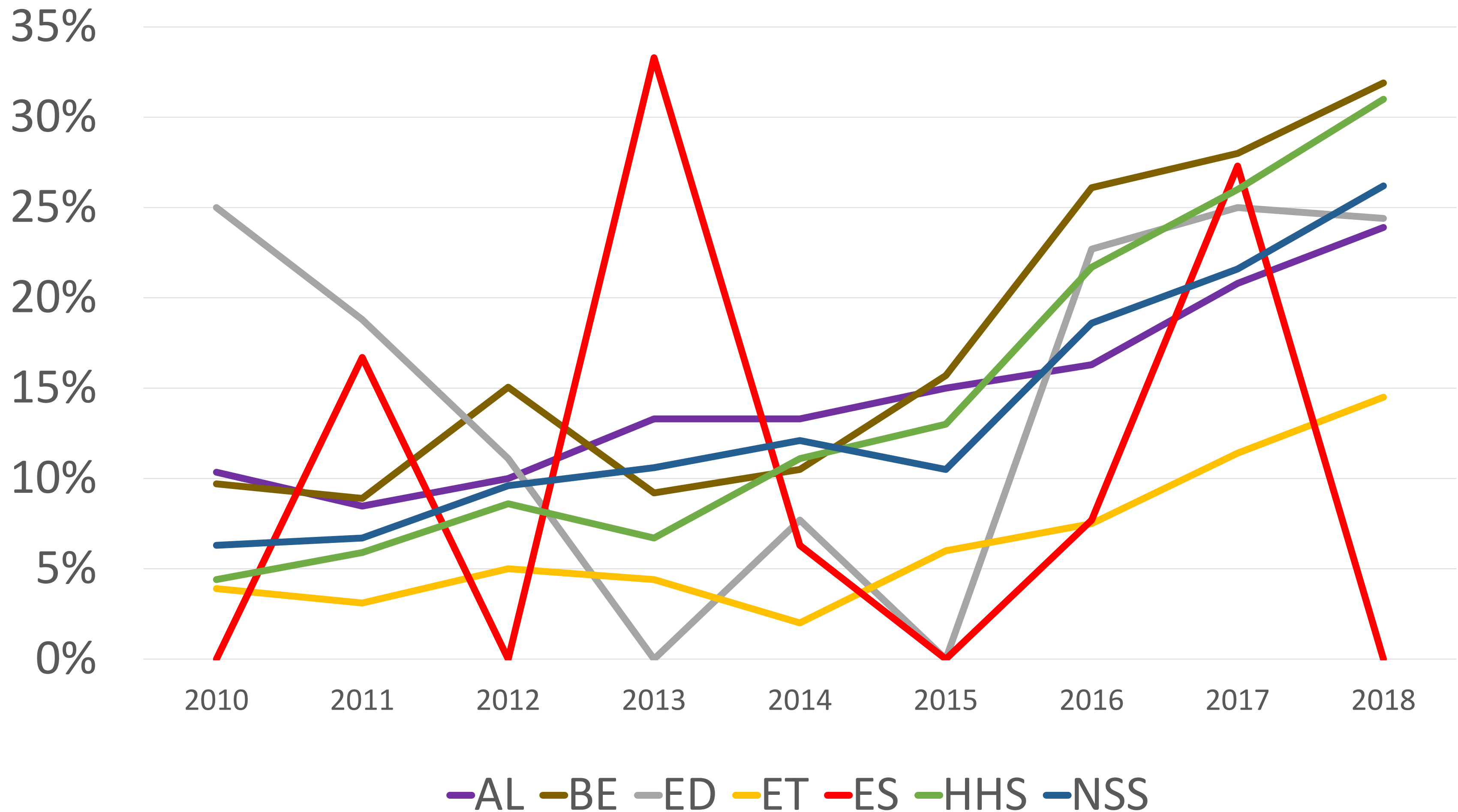


4-Year Graduation Rates: FTF



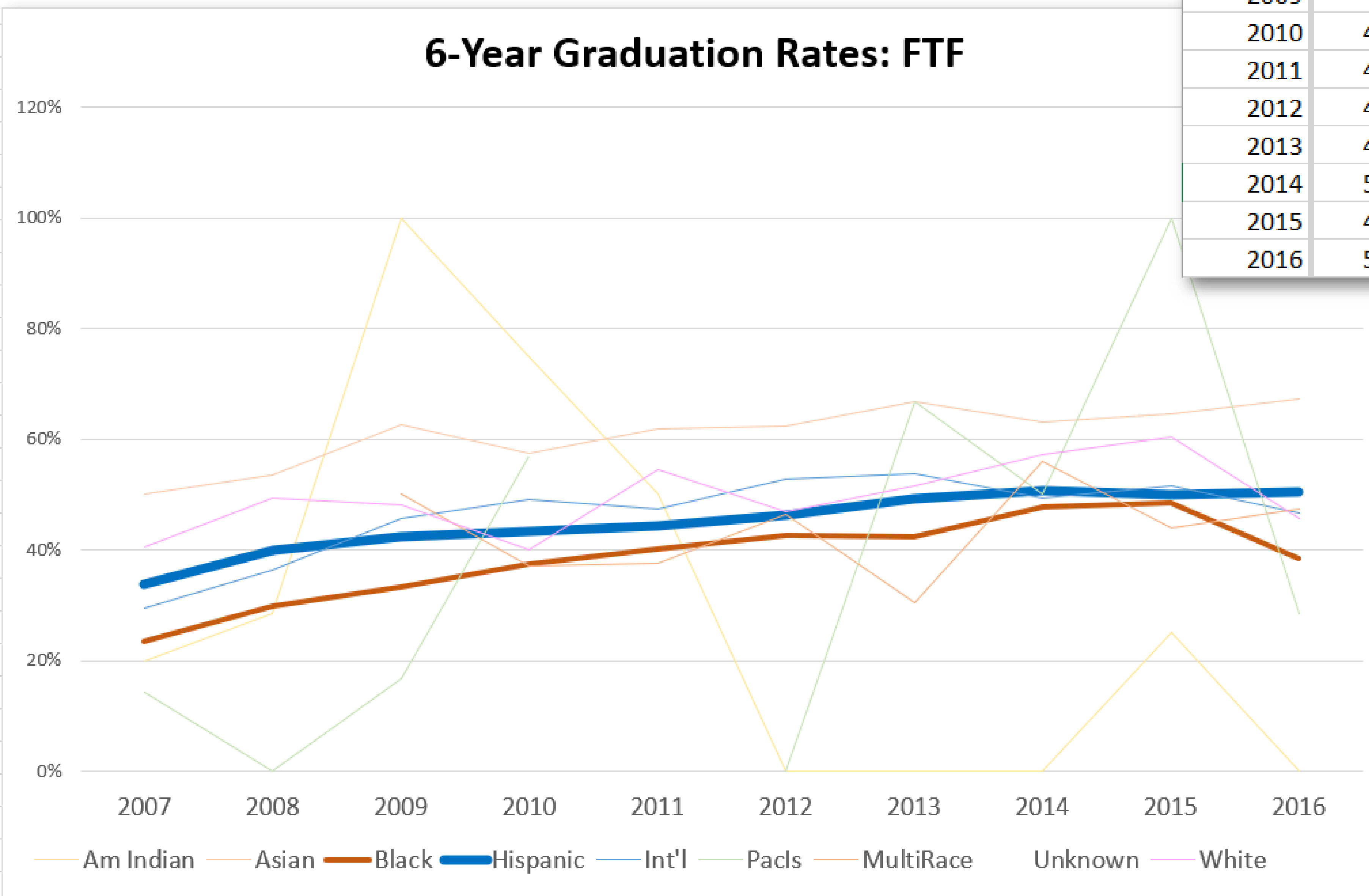
| Cohort | Hispanic |
|--------|----------|
| 2007 | 5.4% |
| 2008 | 3.3% |
| 2009 | 5.6% |
| 2010 | 4.5% |
| 2011 | 4.8% |
| 2012 | 7.0% |
| 2013 | 6.5% |
| 2014 | 7.7% |
| 2015 | 9.4% |
| 2016 | 15.7% |
| 2017 | 19.3% |
| 2018 | 24.0% |

Freshmen 4 Year Graduation Rate by Incoming Cohort Year

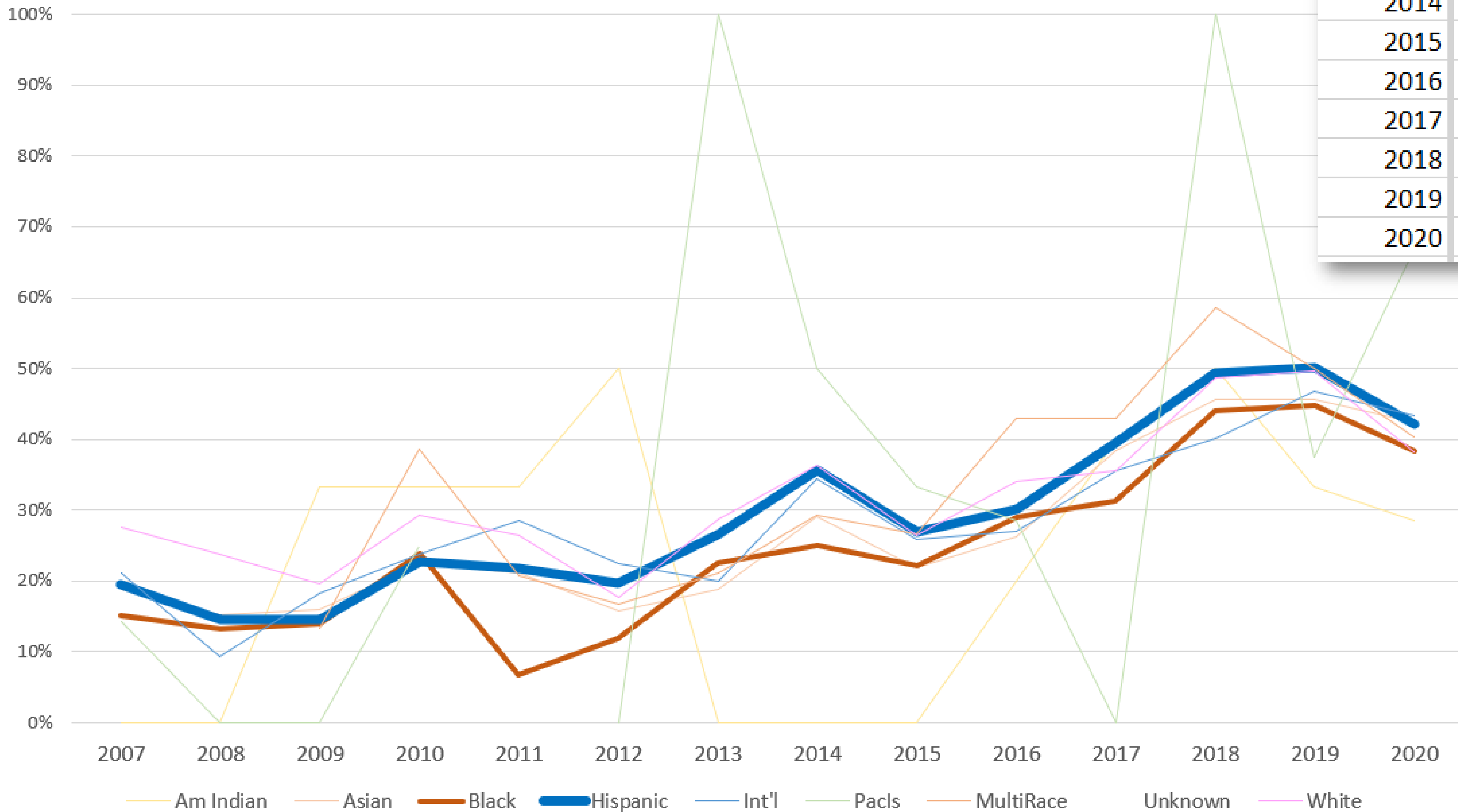


6-Year Graduation Rates: FTF

| Cohort | Hispanic |
|--------|----------|
| 2007 | 33.7% |
| 2008 | 39.9% |
| 2009 | 42.5% |
| 2010 | 43.4% |
| 2011 | 44.3% |
| 2012 | 46.3% |
| 2013 | 49.3% |
| 2014 | 50.8% |
| 2015 | 49.9% |
| 2016 | 50.5% |

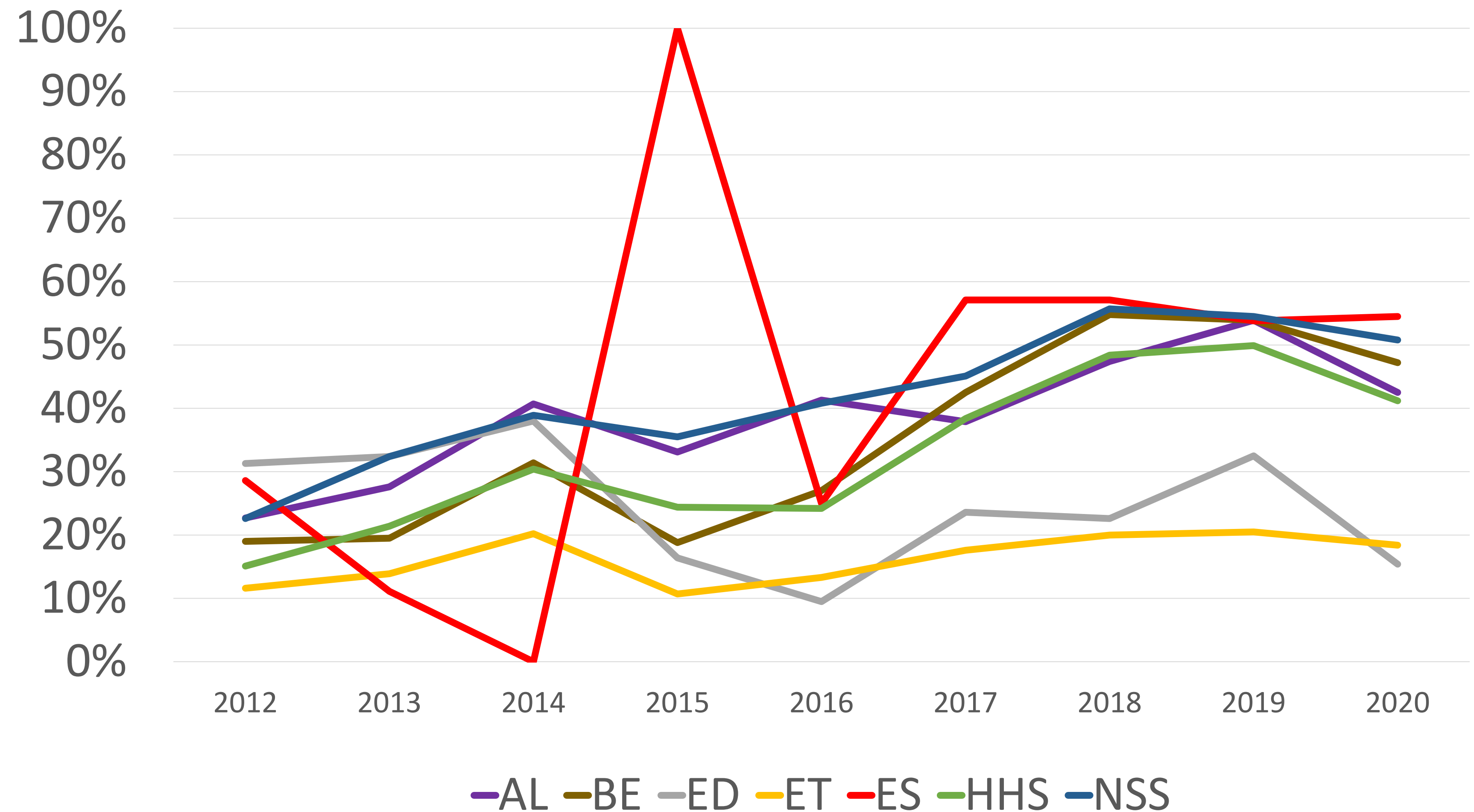


2-Year Graduation Rates: CC Transfers

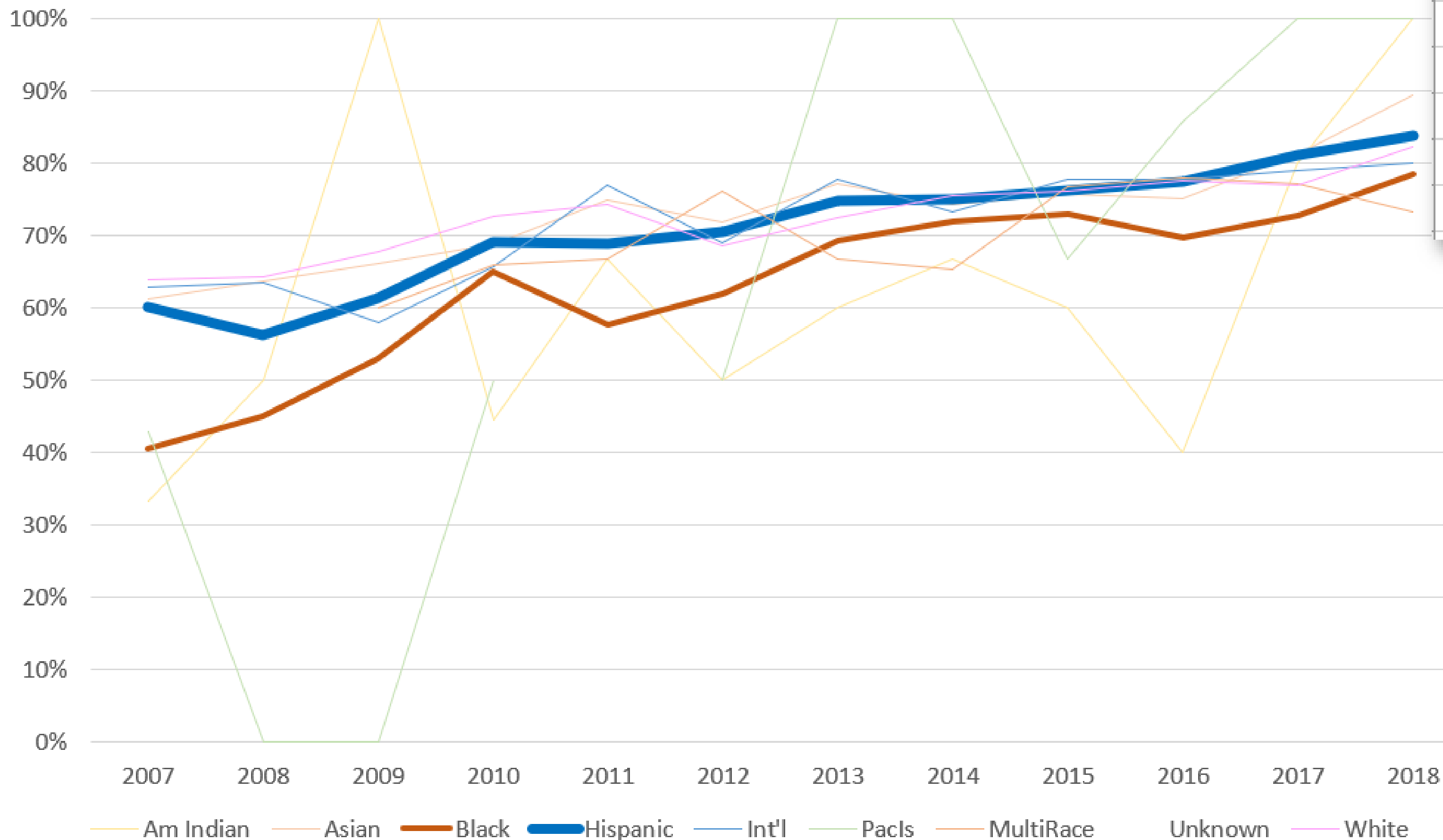


| Cohort | Hispanic |
|--------|----------|
| 2007 | 19.5% |
| 2008 | 14.5% |
| 2009 | 14.6% |
| 2010 | 22.8% |
| 2011 | 21.8% |
| 2012 | 19.6% |
| 2013 | 26.5% |
| 2014 | 35.6% |
| 2015 | 26.9% |
| 2016 | 30.1% |
| 2017 | 39.5% |
| 2018 | 49.3% |
| 2019 | 50.2% |
| 2020 | 42.2% |

Transfer 2 Year Graduation Rate by Incoming Cohort Year

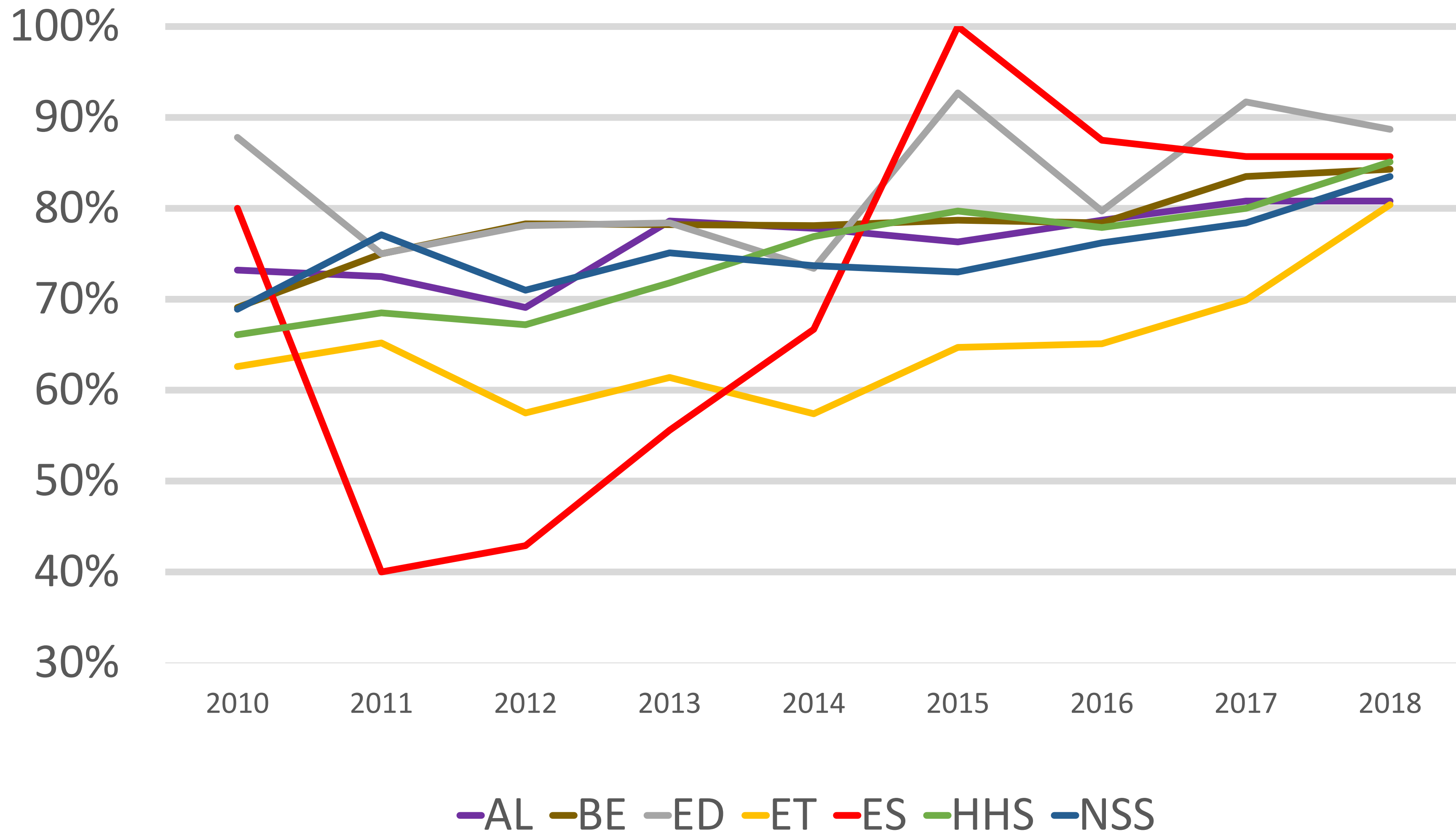


4-Year Graduation Rates: CC Transfers

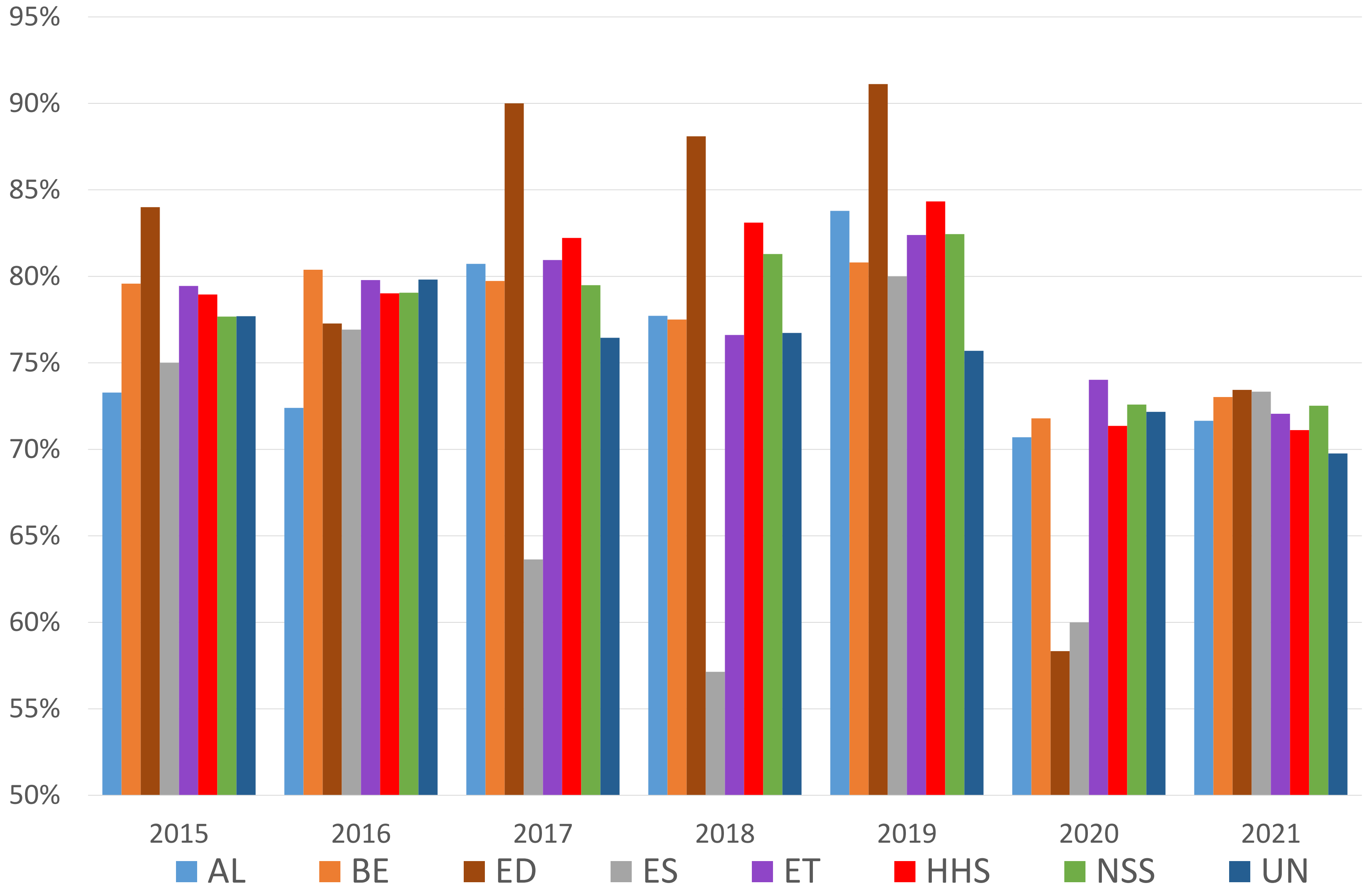


| Cohort | Hispanic |
|--------|----------|
| 2007 | 60.0% |
| 2008 | 56.2% |
| 2009 | 61.3% |
| 2010 | 69.1% |
| 2011 | 68.9% |
| 2012 | 70.4% |
| 2013 | 74.8% |
| 2014 | 74.9% |
| 2015 | 76.3% |
| 2016 | 77.4% |
| 2017 | 81.0% |
| 2018 | 83.7% |

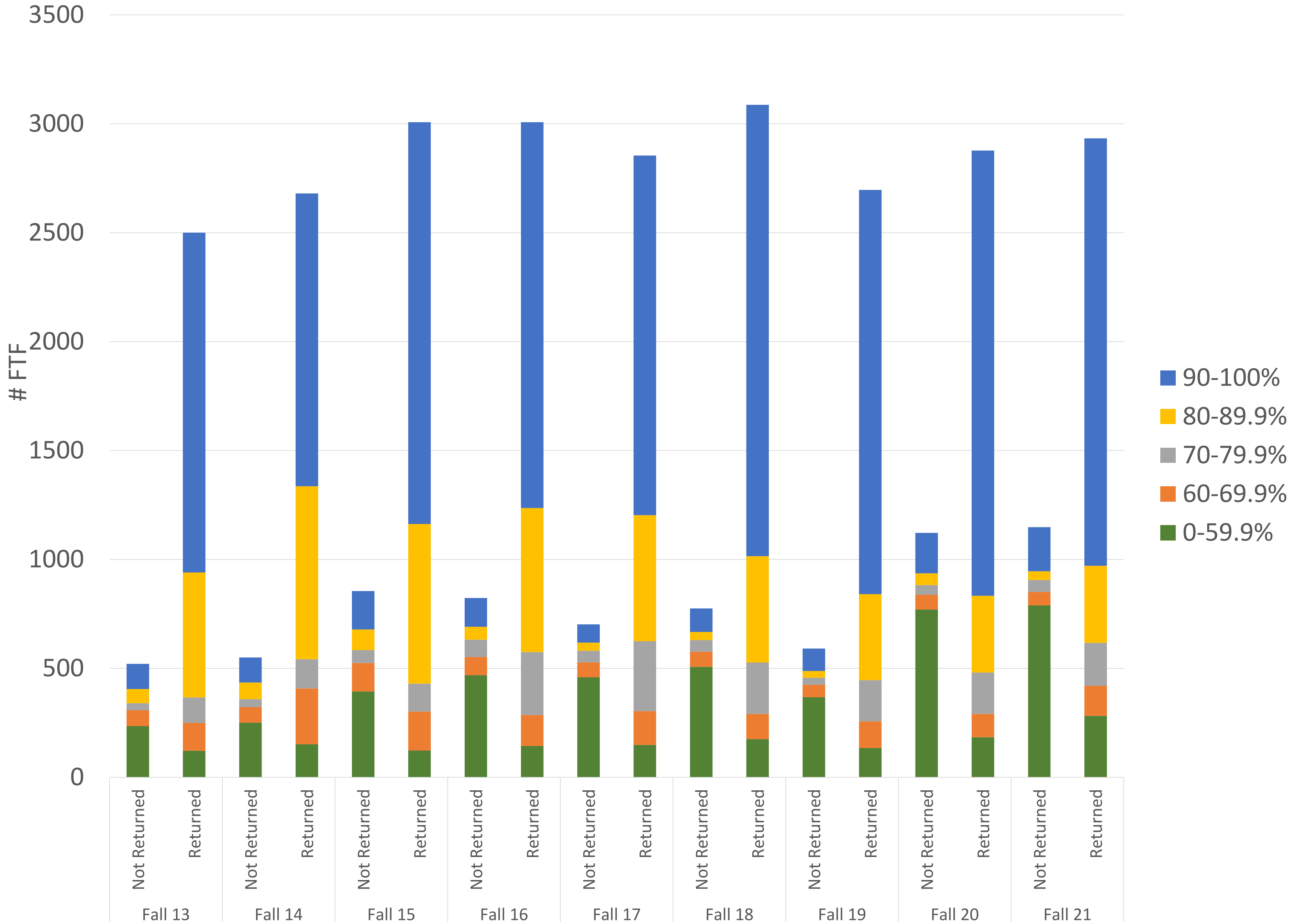
Transfer 4 Year Graduation Rate by Incoming Cohort Year



% of FTF Cohort Returning after 1st Year by College



FTF Retention After 1 Year by Units Completed



Average Unit Load

| | | Fall 2019 | Fall 2020 | Fall 2021 | Fall 2022 |
|-------------------------|---------------------|-----------|-----------|-----------|-----------|
| Full Time % (12+ Units) | First Time Freshmen | 98% | 96% | 95% | 95% |
| | New Transfers | 84% | 82% | 79% | 79% |
| | Continuing | 85% | 83% | 81% | 80% |
| Full Load % (15+ Units) | First Time Freshmen | 71% | 69% | 64% | 62% |
| | New Transfers | 42% | 43% | 33% | 32% |
| | Continuing | 38% | 41% | 38% | 37% |
| Average Unit Load | First Time Freshmen | 14.8 | 14.6 | 14.5 | 14.4 |
| | New Transfers | 12.8 | 12.7 | 12.3 | 12.2 |
| | Continuing | 13 | 13 | 12.7 | 12.6 |