



CAL STATE LA

CALIFORNIA STATE UNIVERSITY, LOS ANGELES

College of Arts & Letters • A&L Productions

5151 State University Drive, Los Angeles, CA 90032-8100

State Playhouse



A&L Productions
California State University, Los Angeles
College of Arts and Letters
5151 State University Drive
Los Angeles, CA 90032
Office: Theatre Arts Building, TA-110
Phone: 323-343-4133
Fax: 323-343-5565
Email: pts@cslanet.calstatela.edu

www.calstatela.edu/academic/al/pts/

INFORMATION GUIDE

A&L Productions is a support unit in the College of Arts and Letters that manages, supports and staffs all usage of the Performing Arts Facilities in the College of Arts and Letters, giving priority to all technical services and support relative to performance, performance venues, instructional/staged/lecture/production activities, and the technical classroom and space needs of faculty and students in the operations of the Department of Theatre and Dance and the Department of Music, as well as college sponsored events within the A&L designated spaces. A&L Productions also provides said services for other constituents both internal and external to the university on a need basis giving priority to the mission of the College of Arts and Letters, its departments and programs, and the educational experiences of Cal State LA students.

The State Playhouse is a 271-seat proscenium theatre housed in the Theatre Arts building on the California State University, Los Angeles campus, sharing support facilities (dressing rooms, technical production shops and equipment, and storage) with The Music Hall concert hall.

Other performance venues that A&L Productions manages include: Music Hall (116 seat concert hall), Arena Theatre (99 seat black box), MUS 115 (49 seat black box), MUS 149 (Choral Room), MUS 150 (Band Room), KH 5108 (dance studio which converts to a dance concert hall), other dance studio spaces (KH 5105, KH 5111, MUS 214), and the Music Courtyard.

This booklet contains detailed logistical and technical information about the State Playhouse. If additional information is required, please contact A&L Productions.

Revised: 20 May 2020

TABLE OF CONTENTS

Contacts & Phone Numbers..... 3

Parking & Transportation Information 5

Local Services 6

Stage/Auditorium Information 7

Stage Dimensions 9

Loading Access..... 10

Dressing Rooms..... 12

Lighting Systems 14

Audio Systems 17

Rigging Systems 24

Lineset Summary..... 25

Draperies..... 27

Projection Systems 28

Music and Orchestra Equipment..... 29

Props and Other Equipment 30

Additional Policies 31

APPENDICES

1. Lighting Circuit Distribution 33

2. Soft Goods Inventory..... 34

CONTACTS & PHONE NUMBERS

In case of emergencies, dial 911 from a campus phone or call 323-343-3700 from your cell phone.

For performing arts facility emergencies (non-life threatening) and safety concerns, call Elizabeth Pietrzak directly at 323-608-6518.

A&L Productions

The A&L Productions Production Office is located in TA 204 in the Theatre Arts building

Production Offices phone	323-343-4133
Production Offices fax	323-343-5565
Production Offices email	pts@cslanet.calstatela.edu
A&L Productions website	www.calstatela.edu/academic/al/pts/

Box Office – TA 103	323-343-4118
Box Office fax	323-343-4071
Online Ticket Sales	www.calstatela.edu/academic/al/purchasetickets.php

Performing Arts Facilities Coordinator – TA 204	323-343-4133
---	--------------

Elizabeth Pietrzak, Technical Director – TA 204	323-343-4132, 323-608-6518 cell
Scene and Property Shop – TA 124	323-343-4116

Department of Theatre and Dance

The Department of Theatre and Dance is located in TA 110 in the Theatre Arts building

Theatre and Dance office – TA 110	323-343-4110
Brittany Mejia – ASC	
Meredith Greenburg – Department Chair	
Bruce Zwinge, Costume Shop – TA 206	323-343-4125
P. Timothy Jones, Lighting Shop – TA 202	323-343-4126

Music Department

The Music Department is located in MUS 127 in the Music building

Music Department office – MUS 127	323-343-4060 , fax 323-343-4063
Kimberly Nieto – ASC	
Emily Moss – Department Chair	
Rico Garcia, Audio Shop – TA 201	323-343-5564
Armando Rosales, Music Instrument Technician – MUS 212	

Campus Services

Dean, College of Arts and Letters – MUS 229	323-343-4001
University Police/Public Safety	323-343-3700
Parking and Transportation	323-343-3700
Facilities Services	323-343-3440
Environmental Health and Safety	323-343-3531

PARKING & TRANSPORTATION

All parking on campus is regulated by the Department of Public Safety at 323-343-3700.

All parking rules and regulations are enforced 7 days a week 24 hours a day.

<http://www.calstatela.edu/parking/parking-regulations>

http://www.calstatela.edu/sites/default/files/users/u89711/cal_state_la_parking_map_2017_0.pdf

Parking Lot 6

- Parking Lot 6 is the nearest to the TA building and is a faculty/staff only parking lot
- One 30-minute parking space near the Luckman Intimate
- Two electric vehicle charging spaces near the Luckman Intimate

Loading Dock (accessed from Parking Lot 6)

- The loading dock shared by The State Playhouse, The Music Hall, and Luckman Gallery and Street of the Arts walkway and amphitheatre.
- NO PARKING is allowed at the Loading Dock.
- The loading dock is for immediate loading and unloading only.

Parking Lot C – Daily Visitor Parking

- Parking Lot C is located directly across from the Luckman Fine Arts Complex
- The top level has hourly and day rate parking available for guests, patrons, and day visitors.
- Permits may be purchased from machines or online.
- All campus parking restrictions are posted and enforced.

Public Transportation

A Metrolink train stop (San Bernardino Line) and Los Angeles Metro bus station are located on the south side of campus off of Circle Drive.

Metrolink trains

www.metrolinktrains.com

Los Angeles Metro bus and light rail

www.metro.net

LOCAL RESOURCES

Area Hospitals:

Huntington Memorial Hospital: private
100 W. California Blvd. Pasadena, CA 91105
626-397-5000

LA County + USC Medical: public
1200 N. State St., Los Angeles, CA 90033
323-226-2622

Taxi Service:

East Yellow Cab
3954 City Terrace Drive, Los Angeles, CA 90063
323-263-8414
323-221-7777

City Cab / Yellow Cab / Bell Cab
1-800-340-8294

Airport Shuttles:

Super Shuttle - 800-258-3826, Group sales – 310-222-5500 ext.144
Prime Time Shuttle – 800-733-8267, Group sales – 310-536-7922

STAGE/AUDITORIUM INFORMATION

The State Playhouse has a proscenium-style stage, with a simple proscenium opening, traditional wing and border masking, and a repositionable apron/orchestra pit lift.

The audience chamber has an asymmetrical design with an orchestra section and with three (3) tiered box seats on the north side.

Seating capacity is 271 persons.

The lobby is enclosed and separated from the auditorium by sound-reinforced doors.

Ticket sales booth is located off of the lobby, with sales performed through glass booth windows to the public outside the lobby.

Audience Chamber – 271 maximum occupancy

- 256 fixed seats
- 11 loose chairs in box seats
- 4 loose barstools in box seats

Wheelchair Locations

- 2 located at house left, Row M, with removal of 2-3 seats
- 3 located in Box Seat 1 area with alternate arrangement of seats

Removable Seats in the Orchestra Section

- 8 the eight house-left-most seats in Row M are removable individually in support of wheelchair/accessibility needs
- 60 the first three rows of seats (Row A, B, C) are all removable in pairs

Stairs from auditorium to stage are NOT available for using during performances or when audiences are occupying the auditorium.

Control Booths

Front-of-house (FOH) control booth is located in the center back of the auditorium and is not enclosed. This is the primary mix position for audio and video, and is secondary control positions for stage management and light board operation.

The primary lighting and stage management control booth is located on the 2nd floor.

Backstage stage management consoles are also available and may be set up stage left.

Stage Floor

- The stage floor is 2x6 tongue-and-groove deck with top layer of ¼" masonite painted black.
- The Masonite floor is painted with **Mann Brothers, Vara-Flor - Black - 770-04.**
- Stage traps
 - There are 16 removable sections of stage traps
 - Each section is 3' - 9" x 7' - 9"
 - Sections are supported by steel beams
 - Use of stage traps will incur added labor for prep and restore as well as to clear access to the basement for machinery or scenery.
- #8 drywall and construction crews are allowed into the deck.
- Nails and lags are NOT allowed into the deck.
- Stairs from auditorium to stage
 - Rehearsal stairs are available during staging and technical rehearsals only
 - Rehearsal stairs must be removed if the auditorium contains an audience of any size.
 - Stairs are NOT available for using during performances or when audiences are occupying the auditorium.
- Orchestra pit
 - The center section of the orchestra pit is able to be re-positioned.
 - The center section cannot be re-positioned for in-show movement.
 - The side wings of the apron/orchestra pit are StageRight platforms and must be manually disassembled and restored.
 - Use of the side wings of the orchestra pit will incur added labor for removal and restore of the platforms.
- Fire curtain
 - The fire curtain must be kept clear at all times, during rehearsal and performances.
 - No scenery may be installed underneath the fire curtain line.
 - No large props or items like grand pianos may be positioned under the fire curtain line.
 - No platforms, risers, or shell may be positioned under the fire curtain line.

STAGE DIMENSIONS

Proscenium Height	20' - 0"
Proscenium Width	44' - 0"
Backstage wall to wall width.....	90' - 0"
Backstage available floor width (minus fly rail)	84' - 0"
Stage left wing space	22' - 8" x 28' - 0"
Stage right wing space	19' - 9" x 32' - 0"
Proscenium/PL to upstage back wall	35' - 0"
Center back of house to PL.....	62' - 10"

Apron – not including orchestra pit cover

Plaster line to DS lip of apron at centerline	2' - 4"
Plaster line to DS lip at SR proscenium.....	1' - 2-1/2"
Plaster line to DS lip at SL proscenium.....	1' - 2-1/2"

Apron –including orchestra pit cover

Plaster line to DS lip of apron at centerline	11' - 8"
Plaster line to DS lip at SR seam	9' - 1-3/4"
Plaster line to DS lip at SL seam	9' - 3"
Apron height from top of house floor carpet.....	3' - 6-1/4"
Apron lip to FOH audio/tech booth (operator position)...	48' - 0"
Apron lip to FOH audio/tech booth façade	44' - 8-1/2"

Orchestra Pit – Gala SpiraLift

Pit cover: width.....	28' - 7-1/2"
Pit cover: centerline to SR seam.....	14' - 10"
Pit cover: centerline to SL seam	14' - 8-1/2"
Pit depth at auditorium level	3' - 4"
Pit depth at orchestra level.....	6' - 10"
Pit depth at shortened orchestra level.....	5' - 4"
Pit depth at basement level	12' - 0"

- Pit lift is a Gala SpiraLift
- Maximum speed = 5 fpm
- 13,250lb lift capacity
- **Pit lift is for equipment moving and orchestra positioning only.**
- **Pit lift is NOT suitable or rated for in-show movement of performers or scenery.**

Note: the pit at auditorium/house level is bounded by a 7-1/2" wide by 2-1/4" tall concrete retaining lip.

Flyrail and Grid

Grid floor above stage	50' - 0"
Upper Gallery stage floor to gallery floor	43' - 6"
stage floor to top of railing	47' - 6"
Lower Gallery stage floor to gallery floor	17' - 7"
stage floor to top of railing	21' - 5"

LOADING ACCESS

The Loading Dock is a flight and a half of stairs lower than the stage and shop levels!

All equipment must be brought up stairs one of three ways: manually up the stairs to the scene shop, through the basement pit lift, or via the elevator in the Music Building next door.

- The loading door from stage to hallway/scene shop is located stage left and is 17' – 0" h x 12' – 0" w.
- The scene shop may be available for in-show storage of large scenery and properties with prior approval.
- Large scenic items will need to be assembled on site either in the scene shop or on stage.
- Loading dock is located in Parking Lot 6.
- Loading dock height 3' – 7"
- No talent or crew parking at loading dock.
- NO OVERNIGHT PARKING at loading dock.
- Shore power is not available.

Scene shop equipment is available for use only by Cal State LA employees as authorized by the A&L Productions Technical Director.

ACCESS ROUTES

Stair access through scene shop

Double doors at bottom of stairs:

- maximum height 8' – 6"
- maximum width 4' – 8"
- maximum diagonal 9' – 6"

Stairwell

- width between railings..... 4' – 4"

Pit Lift access through basement

Basement roll door:

- maximum height 9' – 6"
- maximum width 8' – 0"
- maximum diagonal 11' – 6"

Double doors to stage trap room:

- maximum height 6' – 7"
- maximum width 5' – 7"
- maximum diagonal 7' – 6"

Double doors to pit lift:

- maximum height 6' – 8"
- maximum width 5' – 7"
- maximum diagonal 7' – 6"

Access through Music Building elevator:

Basement door at Parking Lot 6:
 maximum height 6' - 5"
 maximum width 5' - 0"
 maximum diagonal 7' - 6"

Elevator:
 door height 7' - 0"
 door width 3' - 5"
 door diagonal 7' - 0"
 elevator footprint (inside railings).... 46" x 75"

Music Building door to Courtyard:
 maximum height 6' - 10"
 maximum width 5' - 3"
 maximum diagonal 8' - 0"

Covered patio leading to door:
 maximum height 7' - 0"
 maximum width 8' - 0"

Double doors next to box office, leads to hall:
 maximum height 6' - 11"
 maximum width 5' - 11"
 maximum diagonal 8' - 0"

Double doors at hallway egress:
 maximum height 6' - 7"
 maximum width 5' - 7"
 maximum diagonal 7' - 6"

Music Hall stage

Backstage double-doors:
 maximum height 6' - 6"
 maximum width 5' - 10"
 maximum diagonal 7' - 6"

DRESSING ROOMS

All dressing rooms are located through doors upstage left and right.

Upstage left door leads to the greenroom, which provides crossover to upstage right through the backstage hallways.

Three Private/Principal Dressing Rooms

- TA 135, TA 135, TA 140
- Each is equipped with chairs, a makeup counter, lighted mirrors, portable costume racks
- Occupancy 1-3 persons
- Each has an installed speaker connected to the State Playhouse backstage paging and monitoring system

Two Chorus Dressing Rooms

- TA 132 (normally designated Women's Dressing Room)
- TA 136 (normally designated Men's Dressing Room)
- Each is equipped with chairs, makeup counters, lighted mirrors, portable costume racks
- Occupancy 18 persons
- Each has an installed speaker connected to the State Playhouse backstage paging and monitoring system
- One upright piano available for rehearsal or warm-up. Rarely tuned/maintained.

Rehearsal/Warm-up Rooms – None available

Backstage Restrooms

- TA 130 – Women's Restroom
- TA 138 – Men's Restroom
- Each has two showers available during rehearsals and performances to show personnel only

Greenroom

- TA 126
- Furnished with upholstered furniture, tables, and chairs
- Kitchenette with counter, microwave, and refrigerator
- Installed speaker connected to the State Playhouse backstage paging and monitoring system
- Attached gender-neutral restroom, TA 128
- TA 128 restroom can be utilized for quick changes
- All upstage left access between backstage and dressing rooms is through TA 126, the greenroom

TA 139 Classroom

- Furnished with tables and chairs in a classroom or seminar setup
- Installed speaker connected to the State Playhouse backstage paging and monitoring system
- Whiteboards mounted on the west wall
- Classroom A/V system mounted to the south wall
- Can convert to an additional dressing room but with no makeup mirrors or lighting
- Can be used for instrument case storage or similar usage

Laundry Facilities

- Two washing machines and two dryers are located in the Costume Shop on the 2nd floor
- Washing machines require the use of high-efficiency soap only
- Clear-com station for State Playhouse communications located in the Costume Shop, TA 206
- Access and usage for off-campus users requires additional personnel and equipment use fees
- Use of sewing machines and steam irons requires additional approvals, labor supervision, and equipment use fees

Additional Equipment

- Additional portable costume/wardrobe racks
- Portable irons and ironing boards
- Portable vertical steamers

LIGHTING SYSTEMS

Control Console

- ETC Ion control console with 10x2 fader wing
- 4x ETC Sensor SR48 dimmer racks (384 maximum dimmers)
 - D20 dimmer modules – 181 (362 @ 20A dimmers)
 - R20 relay modules – 5 (10 @ 20A relays)
 - CC20 constant power modules – 4 (8 @ 20A, dedicated to worklights and LED power)
 - CEM control modules – 4 total
- Unison rack provides local control of pre-programmed cues as part of the concert house plot.
- ETC Obsession III server provides the interface between the console and the dimmer racks.

Power

Company switches currently not available.

Circuit Distribution

See Appendix 1 for circuit layout chart.

There are no 208v, 230v, or other distributed circuits for moving lights or other equipment that requires power other than 120v.

Support Equipment

Cal State LA EH&S Policy requires all operators and passengers of the aerial lifts to have passed the authorized campus training program for aerial lifts. Only Cal State LA employees may attend the training program.

Ladders 12' A-frame with center extension
 a variety of other smaller ladders available

Lifts Genie AWP-30S telescoping lift (29.5', single person)
 Genie GS-1930 scissor lift (19', two person)

Lighting Equipment

Fixture Inventory

ETC S4 Leko, 750w	2	10 degree
	9	19 degree
	81	26 degree
	37	36 degree
	8	50 degree
ETC S4 Zoom, 575w	3	15-50 degree
ETC Parnel, 575w	4	
Strand 8" Fresnel	40	1000w
Altman 6" Fresnel	9	750w (dedicated running lights on pipe ends)

Fixture Inventory, continued

Altman Spectra-Cyc	30	RGBW LED (15with optional floor trunions)
Century 6' striplights	10	3-color, 120w x 12 lamps
PAR 64	24	various lamp configurations
PAR 64 ACL	4	(all four required to be used together)
Altman 14" scoop	9	500w (dedicated worklights on electrics)
Altman 18" scoop	2	1000w (dedicated worklights on AP1.1)
VariLite VLX Wash	2	
VariLite VL880 Spot	1	(the second unit is unavailable due to repairs needed 04/2020)
ETC S4 Revolution	2	750w (condition unknown as of 01/01/2020)
Star Drop	1 unit	3-6 circuits of twinkle lights
Aquarii Axceleron	12	150w LED AX-150-30-70 (permanently installed house lights)
<u>Wybron M-Fader</u>	12	with fittings for 6.5" and 10" color slots

50# bases

	6	(for 1-1/2" sch 40 pipe)
21' pipe (1-1/2" sch 40)	6	
10' pipe (1-1/2" sch 40)	4	
8' pipe (1-1/2" sch 40)	6	

25# bases

	6	(for 1-1/4" sch 40 pipe)
10' pipe (1-1/4" sch 40)	3	

Accessories available

Add'l 26 degree lens barrels	5	
S4 drop-in iris	13	
S4 pattern holder	45	A-size
S4 pattern holder	35	B-size
S4 glass pattern holder	1	A-size
S4 glass pattern holder	5	B-size
S4 color extenders	24	
S4 top hats	17	
S4 half hats	5	
GAM Twin-spin	2	for S4 drop-in slot
GAM I-cue	2	
10" barndoors	20	4-way barndoor
10" top hats	11	
7.5" barndoors	3	4-way barndoor
7.5" top hats	18	

Spotlights – none available

Fog/Haze

- Antari X-310 Fazer 1
- Dry ice fog machine 1 55 gallon drum

AUDIO SYSTEMS

The State Playhouse features the L-Acoustics ARCS II as the primary sound reinforcement speakers.

The Front of House (FOH) mix position is an open platform located at the center rear of the house. FOH control area is NOT enclosed.

The FOH mixing console is permanently installed at the FOH mix position and DOES NOT MOVE. The Dante Rio Racks and network switches are also installed at FOH and do not move.

House Speaker Systems

- L-Acoustics ARCS II.
- Left, Right, Center speakers clusters, dead hung above apron and will not be repositioned.
- Powered by L-Acoustics LA4X amplifiers installed and tuned by Rat Sound.
 - Left – 2 ARCS Narrow and 1 ARCS Wide, with Sub
 - Center – 2 ARCS Narrow and 1 ARCS Wide
 - Right – 2 ARCS Narrow and 1 ARCS Wide, with Sub
- Side fill speakers mounted box booms in the auditorium.
 - Left Side – EAW VR62 mounted on BB2 R
 - Right Side – EAW VR62 mounted on BB2 L
 - Left Side Rear – EAW VR62 mounted on BB3 R
 - Right Side Rear – EAW VR62 mounted on BB3 L

Alternate House Speaker configurations

- 2 – EAW JF50 (may be added on stage, at audience level for center fill)
- Effects Speakers may be added anywhere on stage for theater productions.

Inputs, Tie Lines, Outputs *(see locations below)*

- 48 mic/line inputs
- 12 tie lines
- 6 speaker outputs

Dante Network Information *(see locations below)*

The Dante network consists of a star topography network with Cat5 cables connecting to various locations within the State Playhouse only. The Central hub is located at the FOH mix position. It is a fully redundant network with primary and secondary switches connecting dedicated lines to all network ports.

Stage Monitor Systems

Up to sixteen separate monitor mixes may be provided for on stage audio fold-back.

The following speakers are available for a variety of configurations.

- 6 – JBL SRX815 (floor wedges)
- 4 – Toa SM-75 (mini hot spot speakers)

Amplifiers

- Three L-Acoustic LA4X power L-C-R speaker clusters and Subs.
- Three Crown CTs 600 amplifiers installed in the basement amp rack
- QSC amplifiers power surround speakers.

Other Speakers Available

- 2 – JBL EON G2
- 2 – JBL EON (powered)
- 2 – JBL EON (passive)
- 3 – JBL EON G2 Subs
- Various practical props and radio prop speakers available.

Hearing Assist System

None available

Monitor and Paging System

Paging system located backstage left on the proscenium wall, with audio monitors to second floor control booth, greenroom, all dressing rooms, and TA 139 classroom.

Production Communication

A two channel Clear-Com system with integrated DX410 Wireless Intercom serves as production communication.

Inputs are located Stage Left, Stage Right, Upstage Center, Orchestra Pit, on the Catwalk AP, on the fly-rail system, at the Audio mix position, at center of the house for the tech table, and in the control booth for stage manager and for the lighting operator.

Four wireless headsets available.

All other headsets and belt-packs are non-wireless.

Front of House Mix Position – Equipment and Connectivity

- Yamaha CL5
 - 56 inputs mic/line inputs
 - 8 DCAs
 - 16 Mixes,
 - 8 Matrices.
 - 16 assignable OMNI outputs,
 - Stereo Master Fader,
 - Mono Fader
 - LCR supported.
 - Built in Effects rack, up to 16 EQs can be patched to any output
 - Premium Effects rack: Reverbs, Delay, Flange, Phaser etc.
 - MIDI in/out available for sync with sound design software
 - Direct Out Recording available via Dante Sound Card

Front of House Mix Position – Equipment and Connectivity, continued

- Dante Network Consisting of Primary and Secondary Networks.
 - Yamaha Rio 3224-D2
 - Yamaha Rio 1608-D2
 - Yamaha Network Switch SWP1-16MMF
 - Yamaha Network Switch SWP1-8MMF
 - Dante Network Patchbay
- Mac Mini
 - Mac OS 10.6.8, 2 x 2.66 GHz dual core Intel, 2 GB 667 MHz DDR
 - 23" Cinema HD display
 - Q-Lab 4, Pro Tools 12, Nuendo Live
 - Extensive sound effects libraries
- Computer Audio Interfaces
 - Dante Sound Card 64 inputs/outputs
 - MOTU 828 MK3 with 8 outputs
- Outboard effects rack
 - 2 Sony CD Players, CDP-D11
- Wireless Access Point
 - TP-Link AC1200
 - For use with Yamaha Stage Mix App
- 2 – 96-point TT Patch-bays for routing inputs and outputs.
- Mic Lines on Patch-bays feed inputs of Yamaha CL5
- Additional Tie Lines 13 through 22 available at FOH mix position.
- Clear Com A and B
- 2 – Tascam CD-500B - CD Players
- Motu 828es

Stage Connectivity and Patch Panels

Stage Left Proscenium Wall Panel

- Mic/line inputs: channels 1 - 40
- Playhouse Tie lines 1 - 12
- Speaker Outputs 1 – 6
- Clear Com A and B
- 6 Tie Lines to Music Hall concert hall (TA 119)
- Dante Network Ports CCE1, CCE2, CCE3, and CCE4

Stage Right Proscenium Wall Panel

- Mic/Line inputs 37 – 48
- Tie Lines 7 – 12
- Speaker Outputs 3 – 6
- Clear Com A and B
- Dante Network Ports AAE1, AAE2, AAE3, AAE4

Orchestra Pit Panel (*pit must be lowered to lower orchestra position to access panel*)

- Mic/Line inputs 1 – 21
- Tie Lines 1 -6
- Speaker Outputs 1-4
- Clear Com A and B

Upstage Center Floor Panel

- Mic Lines 25 – 36
- Tie Lines 1- 6
- Clear Com A and B
- Speaker Outputs 3 – 6
- Dante Network Ports BBE1, BBE2, BBE3, BBE4

Tech Table A - House Left (*floor panel under seat Xxx*)

- Tie Lines
- Clear Com A and B
- Additional Network Tie Lines

Tech Table B – House Center (*floor panel under seat Xxx*)

- Tie Lines
- Clear Com A and B
- Additional Network Tie Lines

Tech Table C – House Right (*floor panel under seat Xxx*)

- Tie Lines
- Clear Com A and B
- Additional Network Tie Lines

Tech Table D - Box Seat 1 (*built into wall on inside of box seat*)

- Tie Lines
- Clear Com A and B
- Additional Network Tie Lines

TA 203 Control Booth

- Tie Lines
- Clear Com A and B
- Additional Network Tie Lines

Additional Audio Equipment/InventoryMicrophones

<u>Manufacturer</u>	<u>Model</u>	<u>Quantity</u>
Shure	SM 57	16
Shure	SM 58	12
Shure	SM 78	3
Shure	Beta 87A	4
Shure	Beta 98	3
Sennheiser	MD 421	7
Sennheiser	MD 441	1
Neumann	KMS 105	5
AKG	C 414B	2
AKG	214	2
AKG	C 414 EB (Black)	1
AKG	C 414 EB (Silver)	1
AKG	C 452 EB	2
AKG	SE 300 B	4
AKG	D 112	1
EV	RE 20	1
Crown	PCC 160	4
Rode	NTG-2 (shotgun)	2
EV	635 (omni)	1
Audio Technica	Pro 45 (black)	4
Audio Technica	Pro 45 (white)	4
Beyerdynamic	Soundstar mkII	1
AKG	headset mic C420	2
Sennheiser	lapel mic	4
Shure SM 11	lapel mic	1
DPA	D:Vote 4099 Piano Kit	2
Schoepps	MSTC 64G ORTF	2
Shure	SM7B	1
Coles	Ribbon AEA	2
Samson	CO1 (Condensers)	1
Placid Audio	Copperphone	1
Whirlwind	PCDI	1
Whirlwind	Direct Boxes	9
Radial DI	J48	1

Wireless Microphones

1 rolling rack of eight channels of wireless microphones are available for use by Department of Music and the Department of Theater and Dance. Other users will be charged equipment use fees to use wireless microphones.

<u>Manufacturer</u>	<u>Model</u>	<u>Quantity</u>
Sennheiser	EM 2050 (Dual Channel)	4
Countryman	E6 headset microphones	9
Sennheiser	SK2000XP (bodypacks)	8
Sennheiser	SKM2000 (handheld mic)	1

1 small kit of Sennheiser Wireless, 2 mic channels. Equipment use fees may apply.

- 2 - EW500G3
- 2 - SK500 G2 bodypacks transmitters
- 2 - G3 handheld mic

Speaker Inventory

<u>Manufacturer</u>	<u>Model</u>	<u>Notes</u>	<u>Quantity</u>
L-Acoustics	ARCS II	LCR Installed in State Playhouse	9
L-Acoustics	SB18M-2	SUBS Installed in State Playhouse	2
JBL	SRX815	800W	8
JBL	EON G2	175 W	2
JBL	EON	140 W	2
JBL	EON SUBS	175 W	3
EAW	JF50	120W @ 16 ohms continuous, 300W program	2
EAW	VR62	250 W @8 ohms, Installed PH side speakers	4
Mackie	SRM-150	used in Playhouse lighting booth	1
TOA	SM-75	70W continuous, 210 W @8 ohms program	4
Community	RS220	8ohms, 200W Continuous RMS, 500W program	1
EAW MK2394	MK2394	Installed in Arena	2
QSC	HPR 153i	Powered Full Range	2
QSC	HPR 18I	Powered Subs	2

In Ear Monitor

- 1 channel of Sennheiser G4 IEM
- 2 SK500 body back receivers.

Prop Speakers

Various radios and other items are available as theatrical props, which can be fitted with working speakers.

Additional Mixing Consoles.

- Yamaha M7CL-48
- Yamaha O1V
- Yamaha O1
- Mackie 1404VLZ
- Yamaha MG102c

Mobile PA

A large rolling rack PA is available for portable use and on-campus event use.

- Yamaha O1V – 16 input channel mixer
- Stereo Mix
- 6 monitor mixes
- 1 Tascam CD player
- 3 QSC amps.

Mobile Multitrack Recording Kit.

A small mobile recording kit is available for recording up to 16 individual inputs.

- MacBook Pro. 15 inch, 2017. 3.1 GHz Intel Core i7. 16GB 2133 MHz LPDDR3
- Focusrite Red 8 pre-amp
- RME Octamic II – 8 channel pre-amp
- Pro Tools, Logix Pro X

Sound Design Production Laptop.

- MacBook Pro 2.5 GHz Intel Core i7. 16 GB 1600 MHz DDR3
- QLab4

Audio Interfaces

- 2 – Avid M-Box Pro
- 1 – Motu 828 Mk3

Mic Stands.

- Short boom stands
- Tall boom stands
- Table stands
- Straight stands

RIGGING SYSTEMS

All linesets over the stage are manual, single purchase linesets with T-track guides.

- There are 44 linesets installed over the stage (see summary next page.)
- Distance between lift lines is c. 13' - 0".
- Due to lift line distance, point loads at mid-span limited to c. 110#.
- Maximum arbor capacity is c. 400# above pipe weight on all linesets.
- Most battens are 1-1/2" sch 40 single pipes.
- Electrics #1-4, #1A and AP2 are ribbon truss.
- Linesets 9, 18, and 32 are double-battens for black legs.
- Batten length varies from 42' - 0" to 68' - 0".
- Most battens will fly to 50' - 0".
- Electrics have various height limits due to cable picks.

Lock rail, loading galleries, and traveler lines are all located SR.

Mid-rail loading gallery:

17' - 5" from stage floor to gallery floor

20 - 11" to top of railing.

Upper loading gallery :

XX' - xx" from stage floor to gallery floor

XX' - xx" to top of railing.

No pin rail systems available.

#2 AP Electric is motorized, not for in show travel.

Load capacity: 748# total for all lighting fixtures, accessories, and cables.

****A&L Productions Technical Director has final approval over all rigging decisions.**

LINESET SUMMARY

Typical Concert/Event House Hang

<u>Lineset #</u>	<u>Description</u>	<u>Notes</u>	<u>Position from Plaster Line</u>
BB3 R	Box Boom 3 House Right	Box Boom	-50' - 3"
BB3 L	Box Boom 3 House Left	Box Boom	-50' - 3"
BB2 R	Box Boom 2 House Right	Box Boom	-27' - 9"
BB2 L	Box Boom 2 House Left	Box Boom	-27' - 9"
AP2	#2 AP Electric (500# load limit)	Motorized Lineset	-25' - 0"
BB1 R	Box Boom 1 House Right	Box Boom	-16' - 9"
BB1 L	Box Boom 1 House Left	Box Boom	-16' - 9"
AP1.2	#1.2 AP Electric DS pipe	Curved, Catwalk	-12' - 8" to -18' - 4"
AP1.1	#1.1 AP Electric US pipe	Curved, Catwalk	-11' - 2" to -16' - 8"
AP0.1	#0.1 AP Electric	<i>(old pipe, scheduled for removal)</i>	-5' - 0"
Tower R	SR Apron Tower	Box Boom	-3' - 3"
Tower L	SL Apron Tower	Box Boom	-3' - 2"
AP0	#0 AP Electric	Fixed/Dead Hung	-2' - 10"
0	Fire Curtain		0' - 3"
1	Grand Teaser	Border with fullness Claret Velour - Fullness spreads from 0' - 9" to 1' - 4"	1' - 0"
1.1	Portal Legs	Legs with fullness on secondary pipes Claret Velour - Fullness spreads from 0' - 9" to 1' - 4"	1' - 0"
2	Main Curtain	Traveler Claret Velour - Fullness spreads from 1' - 4" to 2' - 6"	1' - 11-1/2"
2A	False Proscenium Legs	Dead Hung <i>(scheduled to be removed)</i>	2' - 2"
3	Empty	sometimes interferes with 2A	2' - 7"
4	Empty	hits electric	3' - 1"
5	Electric #1		3' - 10"
6	Electric #1A		5' - 4"
7	Empty		6' - 5"
8	Border #1	Black Velour, sewn flat	7' - 0"
9	Legs #1	Black Velour, sewn flat	7' - 6"
10	Mid-Stage Traveler (Black Velour)	Traveler Black Velour - Fullness spreads from XX' - xx" to XX' - xx"	7' - 10"
11	Empty		8' - 6"
12	Empty		9' - 0"
13	Electric #2		10' - 1"
14	Electric #2A		11' - 3"
15	Empty		11' - 9"
16	Empty		12' - 3"
17	Border #2	Black Velour, sewn flat	12' - 10"
18	Leg #2	Black Velour, sewn flat	13' - 3"
19	Empty		13' - 10"

20	Legs #4 (as screen masking)	Black Velour, sewn flat	14' - 4"
21	FP Screen	does not move	14' - 9"
22	Empty		15' - 3"
23	Empty	hits electric	16' - 0"
24	Electric #3		16' - 9"
25	Empty	hits electric	17' - 9"
26	Empty		18' - 3"
27	Empty		18' - 9"
28	Empty		19' - 3"
29	Empty		19' - 9"
30	Empty		20' - 3"
31	Border #3	Black Velour, sewn flat	20' - 9"
32	Leg #3	Black Velour, sewn flat	21' - 3"
33	OUT OF SERVICE		
34	Empty		22' - 1"
35	Empty		22' - 11"
36	Electric #4		24' - 6"
37	Empty		29' - 9"
38	Upstage Traveler	Traveler	26' - 3"
	<i>Black Velour - Fullness spreads from XX' - xx" to XX' - xx"</i>		
39	Empty		26' - 9"
40	Empty		27' - 6"
41	US Black and Star Drop	Star Drop	34' - 3"
42	Empty		33' - 0"
43	Cyclorama	White Leno-filled Scrim	29' - 2"
44	OUT OF SERVICE		

DRAPERIES

Soft Goods Primary Inventory

Grand Teaser	1 piece	25 oz. claret velour	4' – 6" h	x	49' – 0" w	
		<i>sewn with 100% fullness, no lining</i>				
Portal Legs	2 pieces	25 oz. claret velour	21' – 6" h	x	10' – 0" w	
		<i>sewn with 100% fullness, no lining</i>				
Grand Drape	2 pieces	25 oz. claret velour	21' – 6" h	x	23' – 0" w	
		<i>sewn with 100% fullness, no lining, operates from SR</i>				
Legs	4 pair	25 oz. black velour	27' – 8" h	x	15' – 0" w	sewn flat
Borders	4 pieces	25 oz. black velour	9' – 0" h	x	59' – 0" w	sewn flat
Mid-stage Traveler	2 pieces	25 oz. black velour	21' – 10" h	x	35' – 0" w	
		<i>sewn flat with avora lining, operates from SR.</i>				
Upstage Traveler	2 pieces	25 oz. black velour	23' – 6" h	x	35' – 0" w	
		<i>sewn flat, no lining, operates from SR.</i>				
Upstage Black	2 pieces	15 oz. black velour	27' – 8" h	x	35' – 0" w	sewn flat
		<i>height limits ability to fly out of sightlines or make back wall visible</i>				
Cyclorama	1 piece	white leno-filled scrim,	25' – 0" h	x	60' – 0" w	
White Scrim	1 piece	white sharkstooth scrim	35' – 0" h	x	72' – 0" w	
		<i>height limits ability to fly out of sightlines</i>				
Black Scrim:	1 piece	black sharkstooth scrim	22' – 0" h	x	50' – 0" w	
Cyclorama (alternate)	1 piece	seamless natural muslin	30' – 0" h	x	72' – 0" w	
		<i>height limits ability to fly out of sightlines, must trip to fly out of sightlines</i>				
Black Duvetyne	1 unit	grand teaser alternate	5' – 6" h	x	58' – 0" w	sewn flat
False Prosc. Leg	2 units	flat w/ black duvetyne	20' – 0" h	x	5' – 9" w	
		<i>dead hung on short track with limited ability to position onstage/offstage plans to re-rig to hang off of lineset 1.1 (summer 2020)</i>				
False Prosc. Return	2 units	flat w/ black duvetyne	20' – 0" h	x	XX' – xx" w	
		<i>lashes to False Proscenium Leg left and right</i>				
Star Drop	1 unit	3-6 circuits of twinkle lights				
		<i>(in various states of disrepair – enough to make a decent star effect)</i>				

(See Addendum XX for complete soft goods inventory.)

PROJECTION SYSTEMS

Detail Christie Crimson projector in booth and Panasonic projector on AP2.

Detail SDI connections at various panels around the theatre. Detail analog BNC, ethernet, and other connections.

MUSIC AND ORCHESTRA EQUIPMENT

Choral/Orchestra Shell

- Eight sections of 6' Wenger Legacy Classic folding shell (Purchased in 2014)
- Finish color: warm sand with oyster trim
- Available for traditional choral and orchestra arrangement
- Orchestra capacity of the stage with shell is capped at 75 performers
- Orchestra capacity of the stage without shell is capped at 100 performers

Choral Risers

- Seven sections of four-tier Wenger standing risers (c. 1972 manufacture date)
- Green carpet, steel blue metal frames
- Available for traditional choral arrangement
- Capacity for section each is 12-15 adults

Pianos

Pianos are shared among the State Playhouse and the Music Hall concert hall, with Cal State LA Music Department academic activities receiving priority.

All concert grand piano usage will incur equipment usage and tuning fees.

- 9' Steinway Concert "D" Grand
- 9' Yamaha Concert Grand
- Yamaha N3 AvantGrand Hybrid
- One upright rehearsal/warm-up piano is located in the Men's Dressing Room, and is infrequently tuned. It may be relocated to stage or other location with prior permission.
- One Korg KA-350 keyboard available, with permission of the Music Department

Concert Furniture

- single and double artist's piano bench
- 137 Wenger black musician chairs
- 54 Wenger black concert music stands, metal with rolled edges
- 60 Wenger black music stands, polycarbonate
- 30 music stand lights
- Conductor's riser 3' x 3' x 8" painted black

PROPS AND OTHER EQUIPMENT

Dance Floor

Black vinyl dance floor, matte finish, .05" thick

- Five (5) pieces each 5' – 3" wide by 52' – 6" long
- 26' – 3" total depth from false proscenium to upstage edge
- One (1) piece for apron, 5' – 3" wide, fits between onstage towers and locks out use of orchestra pit lift

Grey vinyl dance floor also available

Stage Manager Console

- Two stage manager consoles are available
- One is a single lectern-sized station
- One is a larger station with flat surface for video monitors, clear-com call lights, etc.
- Both may be moved to either wing, with headset connections run to any location.
- Both have shared usage between the State Playhouse and the Music Hall concert hall.

Platforms/Risers

- Twelve (12) pieces of 4' x 8' Steel Deck risers
- One (1) piece of 4' x 4' Steel Deck risers
- All are shared between the State Playhouse and the Music Hall concert hall, Cal State LA Music Department academic activities receiving priority.
- Stock legs include 8", 12", 16", 24" and 48" nominal rises.
- Corner pieces are NOT available for making curved platform arrangements.
- A variety of wood-framed platforms are available and can be assembled by A&L Productions crew for additional labor charges.
- Exact inventory varies as Cal State LA academic stock fluctuates from year to year.
- Please consult with the A&L Productions Technical Director in advance to see if the existing stock will suit your needs.
- Typical stock includes 4' x 8', 3' x 8', 2' x 8', 1' x 8', 4' x 6', 4' x 4', 4' x 12', etc.

Podiums

- Three podiums are available
- One is oak finished with CSULA logo on the front
- Two are matching simple podiums painted black and are available from props storage

Props and Costumes

- Props and Costumes from storage/stock may be used with prior permission only.
- Access to storage must be scheduled and will incur labor supervision charges.
- Users are responsible for dry-cleaning costs and restocking charges.

ADDITIONAL POLICIES

Food and Drink

No food, drink, or chewing gum is allowed in any of the classrooms, theatres, booths, dressing rooms, backstage, onstage, or in the seating areas. Water is allowed only in sealed, plastic containers, such as bottled water or sports bottles. Keep all food and drink in the greenroom and outside only.

Open Flame

All use of open flame must have prior approval of the California State Fire Marshall.

All scenery must comply with applicable regulations concerning flame retardancy.

CSU Smoke and Tobacco Free Policy

Effective September 1, 2017 Cal State LA will be a 100% smoke and tobacco free campus. Smoking, the use of tobacco products, and the use of designated smoking areas are prohibited on all California State University properties.

Members of the CSU community are expected to fully comply with the policy.

- **Members of the CSU Community:** This includes all students, faculty, staff, alumni, university volunteers, contractors or vendors and visitors to any California State University campus or properties.
- **University Properties:** These include the interior and exterior campus areas of any California State University campus. This definition includes buildings (including residence halls), structures (including parking structures), parking lots, and outdoor areas owned, leased or rented by the university or one of its auxiliaries. Also included are vehicles owned, leased or rented by the university or one of the university's auxiliaries. Private vehicles on university-owned, leased, or rented land or in university-owned, leased, or rented parking structures will also be subject to compliance with Executive Order 1108.
- **Smoke Free:** "Smoke Free" means the use of cigarettes, pipes, cigars, and other "smoke" emanating products including e-cigarettes, vapor devices and other like products are prohibited on all University properties.
- **Smoke or Smoking:** "Smoke" or "Smoking" means inhaling, exhaling, burning, or carrying any lighted or heated cigar, cigarette, cigarillo, pipe, hookah, or any other lighted or heated tobacco or plant product intended for inhalation, whether natural or synthetic, in any manner or in any form. "Smoke" or "Smoking" also includes the use of an electronic smoking device that creates an aerosol or vapor, in any manner or in any form, or the use of any oral smoking device for the purpose of circumventing the prohibition of smoking.
- **Tobacco Product:**
 - A product containing, made or derived from tobacco or nicotine that is intended for human consumption, whether smoked, heated, chewed, absorbed, dissolved, inhaled, snorted, sniffed, or ingested by any other means, including, but not limited to cigarettes, cigars, little cigars, chewing tobacco, pipe tobacco, and snuff.
 - An electronic device that delivers nicotine or other vaporized liquids to the person inhaling from the device, including, but not limited to, an electronic cigarette, cigar, pipe, or hookah.
 - Any component, part, accessory of a tobacco product, whether or not sold separately.

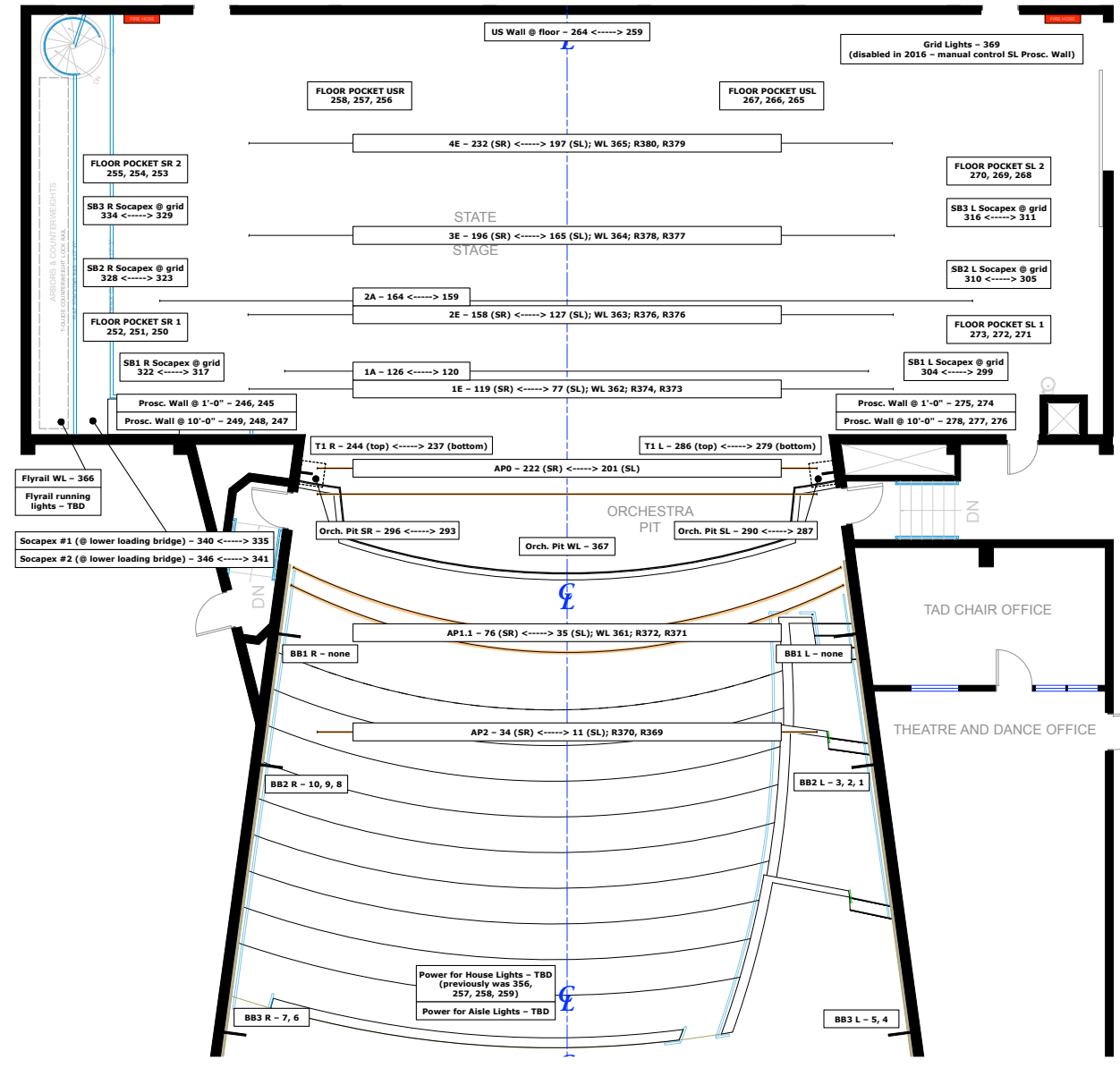
- "Tobacco product" does not include a product that has been approved by the United States Food and Drug Administration for sale as a tobacco cessation product or for other therapeutic purposes where the product is market and sold solely for such an approved purpose.
- **Tobacco Free:** "Tobacco Free" means the use of cigarettes, pipes, cigars, smokeless tobacco, snuffs, and other tobacco products are prohibited on all University properties.

<https://calstate.policystat.com/policy/6591951/latest/>

Stage Weaponry

All stage weaponry usage must receive clearance by University Police before any stage weapons may be brought on campus to be used on stage. University Police will make final determinations regarding what kind of weaponry and live gunfire will be allowed and under what restrictions.

APPENDIX 1 LIGHTING CIRCUIT DISTRIBUTION



APPENDIX 2 SOFT GOODS INVENTORY

PRODUCTION and TECHNICAL SERVICES
Drapery Inventories

Last Modified: August 2018
Date Printed: 5/20/20

ID #	Color	Material	Type	Height	Width	Weight	Line#	G/T/C/W	CH/PP	Fullness	Date last flame treat	Condition and other notes	FDOS	State Tag	Location
Playhouse Standard Stock Drapery															
PH M251	Claret	25oz IFR Charisma	Grand Teaser Main	4'-6"	49'-0"	76#	1	G/T/W	CH	100%	IFR	New	08/31/18		Playhouse
PH M203	Claret	25oz IFR Charisma	Extension SR	21'-6"	10'-0"	68#	1A	C/W	CH	100%	IFR	New	12/04/18		Playhouse or Hamper N
PH M204	Claret	25oz IFR Charisma	Main Extension SL	21'-6"	10'-0"	68#	1A	C/W	CH	100%	IFR	New	12/04/18		Playhouse or Hamper N
PH M201	Claret	25oz IFR Charisma	Main SR	21'-6"	23'-0"	144#	2	C/W	CH	100%	IFR	New	08/31/18		Playhouse
PH M202	Claret	25oz IFR Charisma	Main SL	21'-6"	23'-0"	144#	2	C/W	CH	100%	IFR	New	08/31/18		Playhouse
PH P1	Black	Disotype coated soft flat	Portal Leg	20'-0"	5'-9"							Flat		Poor 6/11/18	Playhouse
PH P2	Black	Disotype coated soft flat	Portal Leg	20'-0"	5'-9"							Flat		Poor 6/11/18	Playhouse
PH B201	Black	25oz IFR Charisma	Border	9'-0"	59'-0"	90#	8	G/T/W	CH	Flat	IFR	New	08/31/18		Playhouse
PH L201	Black	25oz IFR Charisma	Leg	27'-8"	15'-0"	58#	9	G/T/W	CH	Flat	IFR	New	08/31/18		Playhouse
PH L202	Black	25oz IFR Charisma	Leg	27'-8"	15'-0"	58#	9	G/T/W	CH	Flat	IFR	New	08/31/18		Playhouse
PH T201	Black	25oz IFR Charisma	Traveler	21'-10"	35'-0"	130#	10	C/W	CH	w/Avora lining	IFR	New	08/31/18		Playhouse
PH T202	Black	25oz IFR Charisma	Traveler	21'-10"	35'-0"	130#	10	C/W	CH	w/Avora lining	IFR	New	08/31/18		Playhouse

type: scrim, border, leg, panel, painted drop, banner, etc.
G/T/W/C: Grommets, ties, jute or other webbing, clips
CH/PP: Sewn in chain or pipe pocket

page 1 of 6

PRODUCTION and TECHNICAL SERVICES
Drapery Inventories

Last Modified: August 2018
Date Printed: 5/20/20

ID #	Color	Material	Type	Height	Width	Weight	Line#	G/T/C/W	CH/PP	Fullness	Date last flame treat	Condition and other notes	FDOS	State Tag	Location
PH B202	Black	25oz IFR Charisma	Border	9'-0"	59'-0"	90#	17	G/T/W	CH	Flat	IFR	New	08/31/18		Playhouse
PH L203	Black	25oz IFR Charisma	Leg	27'-8"	15'-0"	58#	18	G/T/W	CH	Flat	IFR	New	08/31/18		Playhouse
PH L204	Black	25oz IFR Charisma	Leg	27'-8"	15'-0"	58#	18	G/T/W	CH	Flat	IFR	New	08/31/18		Playhouse
PH L207	Black	25oz IFR Charisma	Leg - as projection masking	27'-8"	15'-0"	58#	19	G/T/W	CH	Flat	IFR	New	08/31/18		Playhouse or Hamper N
PH L208	Black	25oz IFR Charisma	Leg - as projection masking	27'-8"	15'-0"	58#	19	G/T/W	CH	Flat	IFR	New	08/31/18		Playhouse or Hamper N
	White	FP Opaque Screen	Old roll projection screen	15'-0"	19'-6"		20	G/T/W	none	Flat		several patches and repairs	07/07/17		Playhouse
PH B203	Black	25oz IFR Charisma	Border	9'-0"	59'-0"	90#	31	G/T/W	CH	Flat	IFR	New	08/31/18		Playhouse
PH L205	Black	25oz IFR Charisma	Leg	27'-8"	15'-0"	58#	32	G/T/W	CH	Flat	IFR	New	08/31/18		Playhouse
PH L206	Black	25oz IFR Charisma	Leg	27'-8"	15'-0"	58#	32	G/T/W	CH	Flat	IFR	New	08/31/18		Playhouse
PH T203	Black	25oz IFR Charisma	Traveler	23'-6"	35'-0"	100#	38	C/W	CH	Flat	IFR	New	08/31/18		Playhouse
PH T204	Black	25oz IFR Charisma	Traveler	23'-6"	35'-0"	100#	38	C/W	CH	Flat	IFR	New	08/31/18		Playhouse

type: scrim, border, leg, panel, painted drop, banner, etc.
G/T/W/C: Grommets, ties, jute or other webbing, clips
CH/PP: Sewn in chain or pipe pocket

page 2 of 6

PRODUCTION and TECHNICAL SERVICES
Drapery Inventories

Last Modified: August 2018
 Date Printed: 5/20/20

ID #	Color	Material	Type	Height	Width	Weight	Line#	G/T/C/W	CH/PP	Fullness	Date last flame treat	Condition and other notes	FPOS	State Tag	Location
PH CYC201	White	Leno filled scrim	Scrim	25'-0"	60'-0"	65#	43	G/T/W	PP	Flat		New	08/31/18		Playhouse
PH FB201	Black	15oz IFR Encore	US Black Star Panel	27'-8"	35'-0"	76#	41	G/T/W	CH	Flat	IFR	New	08/31/18		Playhouse
PH FB202	Black	15oz IFR Encore	US Black Star Panel	27'-8"	35'-0"	76#	41	G/T/W	CH	Flat	IFR	New	08/31/18		Playhouse
		LX effect	Star Drop				41					twinkle lights in several circuits			Playhouse
Playhouse Stock (not normally in the air)															
PH P3	Black	Duveltyne	Portal Border	5'-6"	58'-0"	30#		G/T/W	---	Flat		Re-sized from 4'-6" to 5'-6" 08/2019.	2006		Cabinet A
PH B204	Black	25oz IFR Charisma	Border	9'-0"	59'-0"	90#		G/T/W	CH	Flat	IFR	New	08/31/18		Cabinet A
PH T2A	Black	21oz Virtue	Traveler (L Panel)	23'-0"	28'-6"	80#		G/S/W	CH	Flat	4/10/06	Good. 51' 3" Total Width; old upstage traveler 6/11/18	04/10/06		Hamper F
PH T2B	Black	21oz Virtue	Traveler (R panel)	23'-0"	28'-6"	80#		G/S/W	CH	Flat	4/10/06	Good. 51' 3" Total Width; old upstage traveler 6/11/18	04/10/06		Hamper F

type: scrim, border, leg, panel, painted drop, banner, etc.
 G/T/W/C: Grommets, ties, jute or other webbing, clips
 CH/PP: Sewn in chain or pipe pocket

PRODUCTION and TECHNICAL SERVICES
Drapery Inventories

Last Modified: August 2018
 Date Printed: 5/20/20

ID #	Color	Material	Type	Height	Width	Weight	Line#	G/T/C/W	CH/PP	Fullness	Date last flame treat	Condition and other notes	FPOS	State Tag	Location
SB15 PH	Black	Sharkstooth	Scrim	22'-0"	50'-0"			G/T/W	PP	Flat	20-Sep-16	Playhouse black scrim (Duplicated on Scrim sheet.)	09/30/16		Hamper C
CYC1	Natural	Muslin	Cyclorama	30'-0"	72'-0"	140#					3/11/03	Old cyclorama	3/11/03		Hamper C
	Grey	Front Projection	SuperTitle Screen (hard flats)	18'-0"	24'-7"							(Duplicated on Music Hall and Projection sheets.)			Music Hall

type: scrim, border, leg, panel, painted drop, banner, etc.
 G/T/W/C: Grommets, ties, jute or other webbing, clips
 CH/PP: Sewn in chain or pipe pocket

PRODUCTION and TECHNICAL SERVICES
Drapery Inventories

Last Modified: August 2018
 Date Printed: 5/20/20

ID #	Color	Material	Type	Height	Width	Weight	Line#	G/T/C/W	CH/PP	Fullness	Date last flame treat	Condition and other notes	FDOS	State Tag	Location
Playhouse Old Sets (removed from regular use 6/11/18)															
PH L1	Black	Velour	Leg	27'-8"	15'-0"	55#						Fair; old Playhouse leg set moved to storage 6/11/18			Cabinet B
PH L2	Black	Velour	Leg	27'-8"	15'-0"	55#						Fair; old Playhouse leg set moved to storage 6/11/18			Cabinet B
PH L3	Black	Velour	Leg	27'-8"	15'-0"	55#						Fair; old Playhouse leg set moved to storage 6/11/18			Cabinet B
PH L4	Black	Velour	Leg	27'-8"	15'-0"	55#						Fair; old Playhouse leg set moved to storage 6/11/18			Cabinet B
PH L5	Black	Velour	Leg	27'-8"	15'-0"	55#						Fair; old Playhouse leg set moved to storage 6/11/18			Cabinet B
PH L6	Black	Velour	Leg	27'-8"	15'-0"	55#						Fair; old Playhouse leg set moved to storage 6/11/18			Cabinet B
PH L7	Black	Velour	Leg	27'-8"	15'-0"	55#						Fair; old Playhouse leg set moved to storage 6/11/18			Cabinet B
PH L8	Black	Velour	Leg	27'-8"	15'-0"	55#						Fair; old Playhouse leg set moved to storage 6/11/18			Cabinet B
PH B1	Black	Velour	Border	9'-0"	59'-0"	100#				100% ?		Regular fade marks; old Playhouse border set moved to storage 6/11/18			Cabinet A

type: scrim, border, leg, panel, painted drop, banner, etc.
 G/T/W/C: Grommets, ties, jute or other webbing, clips
 CH/PP: Sewn in chain or pipe pocket

PRODUCTION and TECHNICAL SERVICES
Drapery Inventories

Last Modified: August 2018
 Date Printed: 5/20/20

ID #	Color	Material	Type	Height	Width	Weight	Line#	G/T/C/W	CH/PP	Fullness	Date last flame treat	Condition and other notes	FDOS	State Tag	Location
PH B2	Black	Velour	Border	9'-0"	59'-0"	100#				100% ?		Regular fade marks; old Playhouse border set moved to storage 6/11/18			Cabinet A
PH B3	Black	Velour	Border	9'-0"	59'-0"	100#				100% ?		Regular fade marks; old Playhouse border set moved to storage 6/11/18			Cabinet A

type: scrim, border, leg, panel, painted drop, banner, etc.
 G/T/W/C: Grommets, ties, jute or other webbing, clips
 CH/PP: Sewn in chain or pipe pocket