



CAL STATE LA

CALIFORNIA STATE UNIVERSITY, LOS ANGELES

Cal State LA Academic Senate 101

Fall Semester 2019

Tuesday, August 20 1:45 – 3:45 pm



CAL STATE LA

CALIFORNIA STATE UNIVERSITY, LOS ANGELES



**Preamble
to the
Constitution:
General
Principle**

The orderly participation of faculty in *policy making*, and a *clearly defined organizational structure* designed to promote such participation contributes to a *clearer understanding of the mutual problems and responsibilities of the faculty and the administration* of California State University, Los Angeles.

-- *The Constitution of the Faculty California State University, Los Angeles*

Academic Senate

Executive Committee

Standing Committees

Nominations

Educational
Policy

Faculty
Policy

Fiscal
Policy

Student
Policy

Subcommittees

Academic Advisement
Academic Information Resources
Curriculum
General Education
Library
Program Review
Graduate Studies Subcommittee

Academic Senate Membership

35 Faculty representatives (*by apportionment—from each college and the library and student affairs*)

5 At-Large Senators

2 Academic Senators from CSU

7 Lecturers

(1 per academic college; 1 not affiliated to college e.g. Counselors; Coaches, Librarians)

6 Student Senators (*4 undergraduate and 2 graduate*)

2 Emeriti Faculty Senators

2 Staff Members

7 Ex Officio College Deans and Dean of the Library

1 Ex Officio Immediate Past Chair

Honorary Administrators (non-voting)—President, Provost and Vice Presidents

Honorary Member (non-voting) - CFA President

Academic Senate

Executive Committee

Standing Committees

Nominations

Educational
Policy

Faculty
Policy

Fiscal
Policy

Student
Policy

Subcommittees

Academic Advisement
Academic Information Resources
Curriculum
General Education
Library
Program Review
Graduate Studies Subcommittee

The 2019-2020 Executive Committee

Chair: Veena Prabhu, Management

Vice Chair: Talia Bettcher, Philosophy

Secretary: *Vacant*

At Large: Andre Ellis, Geosciences

At Large: Cari Flint, Communication Disorders

At Large: Anthony Hernandez, Division of Applied and Advance Studies in
Education

At Large: Heidi Riggio, Psychology

Senior Statewide Senator: Heidi Riggio, Psychology

Academic Senate Office

Rhonda Roquemore

Administrative Analyst Specialist

Jean Lazo-Uy

Administrative Support Coordinator

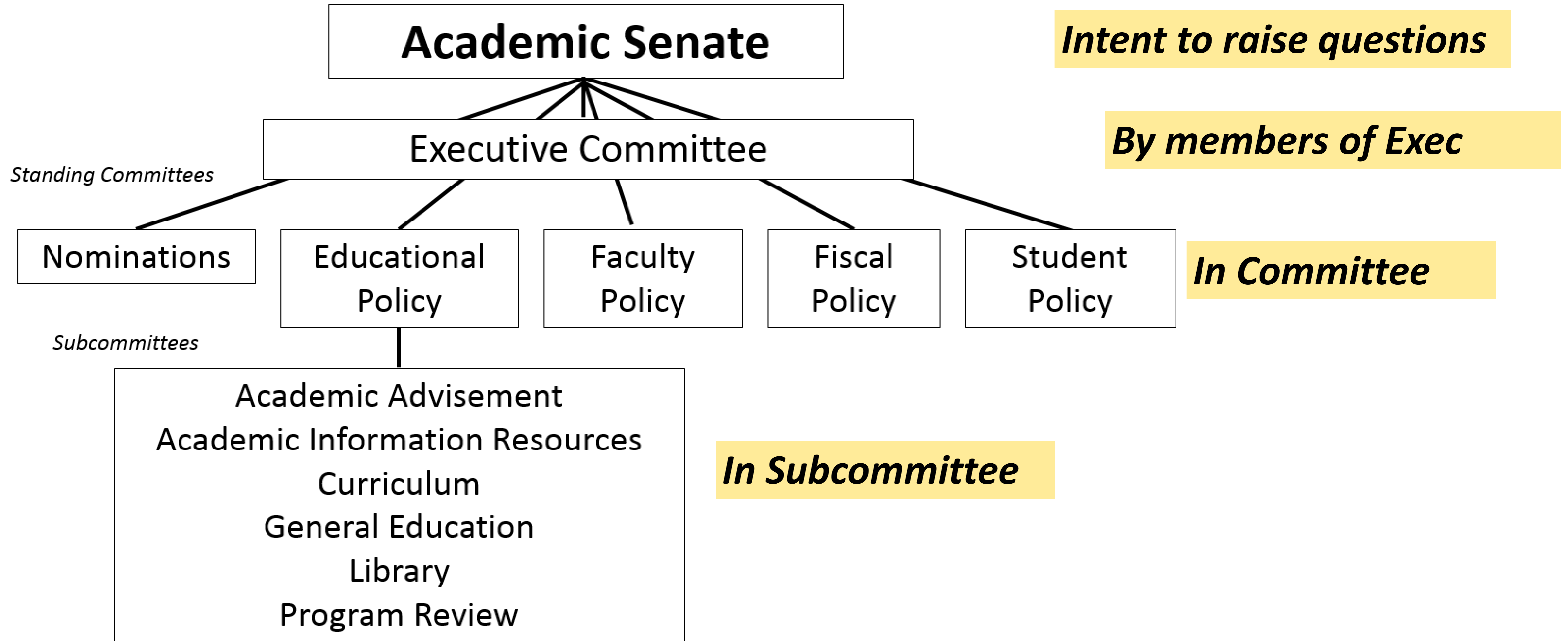
Academic Senate Office: Administration 317

Tel: (323) 343-3750

Fax: (323) 343-6495

Academic Senate website: <http://www.calstatela.edu/academicsenate>

Where can a new policy or a policy modification originate?



Academic Senate

President

Executive Committee

Standing Committees

Nominations

Educational
Policy

Faculty
Policy

Fiscal
Policy

Student
Policy

Subcommittees

Academic Advisement
Academic Information Resources
Curriculum
General Education
Library
Program Review
Graduate Studies Subcommittee

*How is a policy
written and
approved?*

Academic Senate

President

Executive Committee

Standing Committees

Nominations

Educational
Policy

Faculty
Policy

Fiscal
Policy

Student
Policy

Subcommittees

Academic Advisement
Academic Information Resources
Curriculum
General Education
Library
Program Review
Graduate Studies Subcommittee

*How is a policy
written and
approved?*

Academic Senate

President

Executive Committee

Standing Committees

Nominations

Educational
Policy

Faculty
Policy

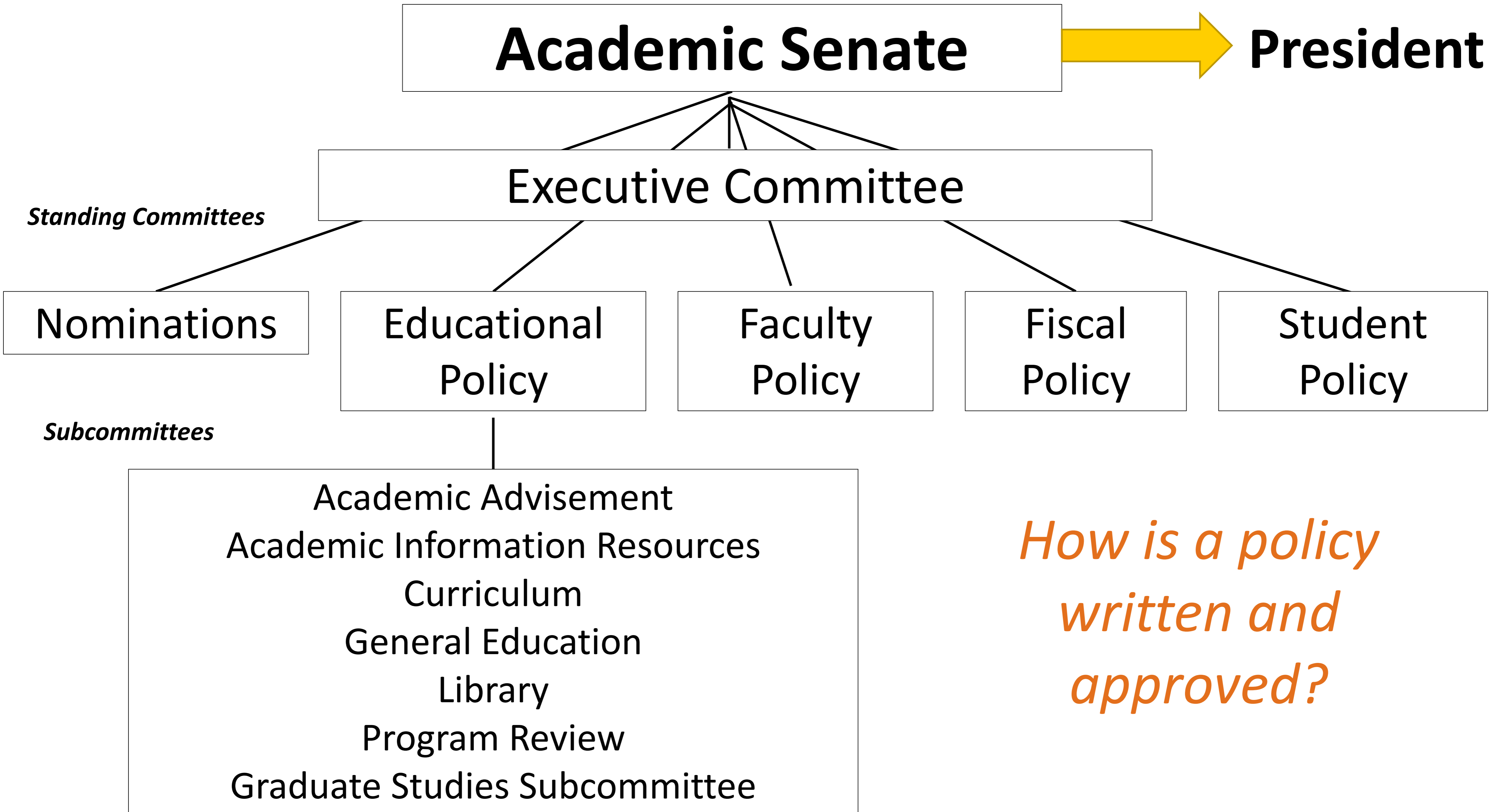
Fiscal
Policy

Student
Policy

Subcommittees

Academic Advisement
Academic Information Resources
Curriculum
General Education
Library
Program Review
Graduate Studies Subcommittee

*How is a policy
written and
approved?*



How is a policy written and approved?

Your Role as a Senator

Please Communicate!

Two-way communication with the colleagues you represent

Shared responsibility

Know your frame of reference

Understand others' frame of reference

Please do your homework!

Policies

Nominations

Issues of Concern and Intent to Raise Questions

Personal note!

All Senators are **PASSIONATE!**

TO: 2016-2017 ACADEMIC SENATE

FROM: Nancy Warter-Perez, Chair

SUBJECT: NOTICE and AGENDA for Next Meeting

The next meeting of the 2016-2017 Academic Senate will be held on September 27, 2016 from 1:40 to 2:55 p.m. in the **Golden Eagle, Ballroom 3.**

Academic Senate Agenda Sample

AGENDA

- 1. Announcements
- 2. Concerns from the Floor (ASC 16-1)
- 3. Intent to Raise Questions
- 4. Approval of the Minutes of the Meeting of September 20, 2016 (ASM 16-5)
- 5. Approval of the Agenda
- 6. Senate Chair's Report
- 7. Provost's Report

First-Reading Item

- 8. Proposed Policy Modification: Appointment of Administrators - Formal and Informal Consultation; Ad Hoc Advisory Committees, Faculty Handbook, Chapter III (16-4)

Second-Reading Items

- 9. Proposed Policy Modification: Study Load for Graduate Students, Faculty Handbook, Chapter IV (15-23)
- 10. Proposed Policy Modification: Modes of Delivery, Faculty Handbook, Chapter IV (15-24)
- 11. Proposed Policy Modification: The Student Policy Committee, Faculty Handbook, Chapter IV (16-3)

First and Second Reading Items

Before a FIRST reading item

- Read the policy
- Discuss with colleagues
- Ask questions in senate during the 1st reading

Before a SECOND reading item

- Prepare any suggested modifications (write it down; preferably share it with Senate Office, ahead of time)
- Make a motion for your modification

Academic Senate Meetings 2019-20

Senate will continue to meet **alternate** *Tuesdays from 1:45 – 3:45 p.m.*

Off week meetings:

- Certain **dedicated Senate events**
- **Several pending policies** on the senate floor

<http://www.calstatela.edu/academicsenate/academic-senate-calendar>

Fall 2019	Spring 2020
1. August 27	1. January 28
2. September 10	2. February 11
3. September 24	3. February 25
4. October 8	4. March 10
5. October 22	5. March 24
6. November 5	6. April 7
7. November 19	7. April 21
8. December 3	8. May 5

Academic Senate Homepage

www.calstatela.edu/academicsenate

CAL STATE LA ACADEMIC SENATE

Preamble-Constitution of the Faculty, California State University, Los Angeles

... understanding of the mutual problems and responsibilities of the faculty and the administration of California State University, Los Angeles

Academic Senate <ul style="list-style-type: none">• Academic Senate Membership• Academic Senate Calendar• Agenda• Minutes<ul style="list-style-type: none">◦ Archived Minutes• Policies (Pending Approval)• Approved Policies<ul style="list-style-type: none">◦ Archived Approved Policies• Statewide Senate Reports	Executive Committee <ul style="list-style-type: none">• Executive Committee Membership• Executive Committee Meeting	Standing Committees <ul style="list-style-type: none">• Educational Policy Committee• Faculty Policy Committee• Fiscal Policy Committee• Nomination Committee• Student Policy Committee• Archived Committee Minutes
Educational Policy Subcommittees <ul style="list-style-type: none">• Academic Advisement Subcommittee• Academic Information Resources Subcommittee• Curriculum Subcommittee• Graduate Studies Subcommittee• General Education Subcommittee• Library Subcommittee• Program Review Subcommittee• Archived Subcommittee Minutes	Senate Presentations <ul style="list-style-type: none">• AY 2017-18	Senate Events <ul style="list-style-type: none">• University Retreat Fall 2017• Spring 2018 Senate Retreat• Distinguished Lecture on ESPG• President's Distinguished Professor
Campus Updates <ul style="list-style-type: none">• Provost and Vice President for Academic Affairs• Vice President for Student Life• Vice President for Administration & Finance and CFO• Vice President for University Advancement	Awards & Services <ul style="list-style-type: none">• Outstanding Professor Awards• University Service Opportunities	Useful Resources <ul style="list-style-type: none">• Robert's Rules• Contact the CARE Team• Budget Administration

STATEWIDE ACADEMIC SENATE - CSU

CSU-RELATED

FAQs

Academic Senate Office



Faculty Handbook

[Table of contents](#)

[About The Handbook](#)

[Appendices](#)

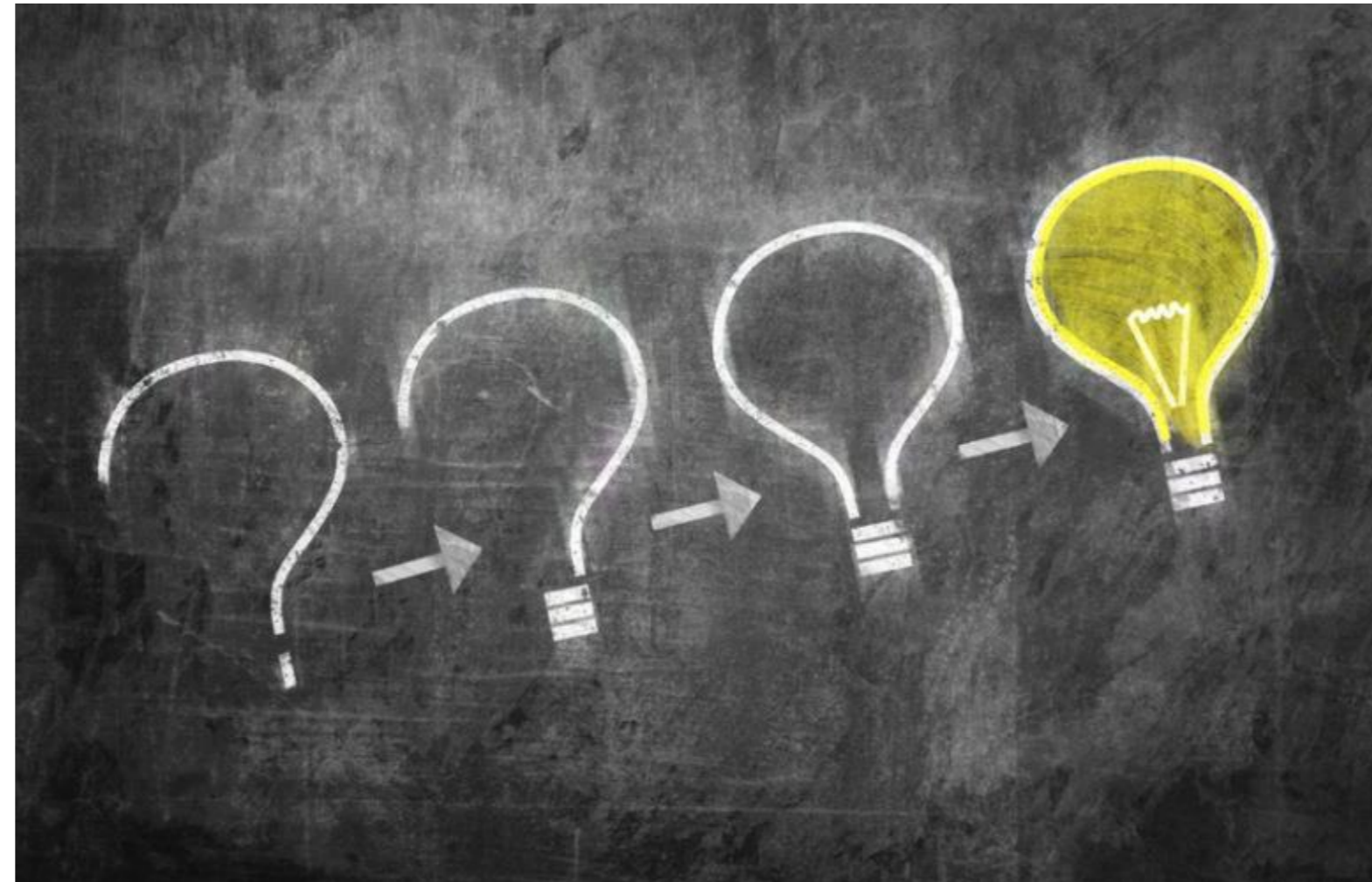
[Search](#)

[Index](#)

Foreword	Message From the President
Chapter I	Organization of the California State University, and California State University, Los Angeles
Chapter II	Governance of the University
Chapter III	Administration of the University
Chapter IV	Curricular Policies
Chapter V	Instructional Policies
Chapter VI	Personnel and Professional Policies
Chapter VII	Research Policies
Chapter VIII	Other Opportunities, Resources Facilities and Benefits

Web site last updated: Fall 2017

Questions, Ideas, Feedback?



A **BIG Thank you** for serving as a SENATOR!

Next Week!

Meeting #1, Tuesday, August 27th

**Thank you and have a spectacular
year ahead!**



CAL STATE LA

CALIFORNIA STATE UNIVERSITY, LOS ANGELES